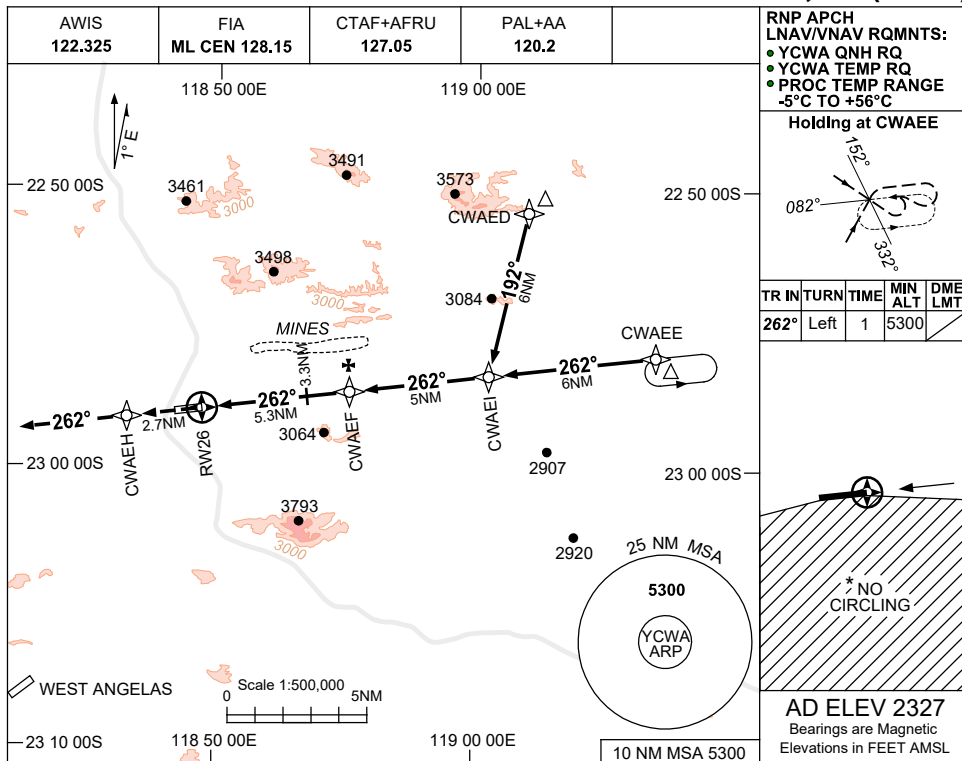


USE QNH

RNP RWY 26

30 NOV 2023

COONDEWANNA, WA (YCWA)



**RNP APCH LNAV/VNAV RQMNTS:**

- YCWA QNH RQ
- YCWA TEMP RQ
- PROC TEMP RANGE -5°C TO +56°C

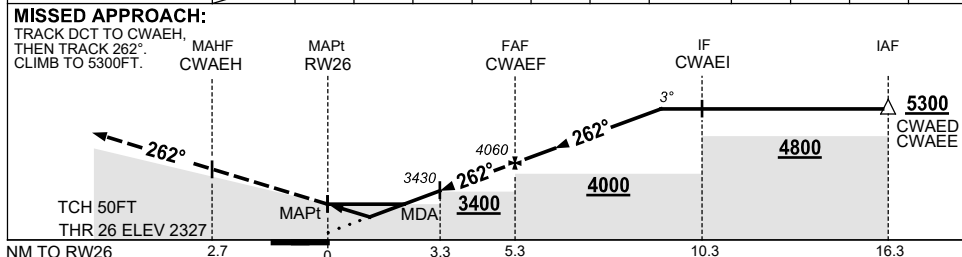
**Holding at CWAEE**

TR IN	TURN	TIME	MIN ALT	DME LMT
262°	Left	1	5300	

**AD ELEV 2327**  
Bearings are Magnetic  
Elevations in FEET AMSL

\* NO CIRCLING

NM TO NEXT WPT	RW26	1.5	2.5	3	3.3	4	5	CWAEF	1	2	3	4
ALT (3° APCH PATH)		2840	3170	3330	3430	3650	3970	4060	4370	4690	5010	5300



**NOTES**

1. MAX IAS: INITIAL : 230KT.
- \* 2. NO CIRCLING S OF RWY 08/26.

CATEGORY	A	B	C	D
LNAV/VNAV		2840 (513-2.9)		
LNAV		3170 (843-4.8)		
CIRCLING *	3340 (1013-2.4)		3700 (1373-4.0)	4160 (1833-5.0)
ALTERNATE	(1513-4.4)		(1873-6.0)	(2333-7.0)

3. BLASTING OPS (SEE ERSA)
4. APCH PATH ANGLE DOES NOT COINCIDE WITH PAPI ON GLIDE SLOPE INDICATION.
5. COLOUR: SEE SPEC NOTICES.

Changes: CHART TITLE, PBN SPECIFICATION BOX, Editorial.

CWAGN02-177