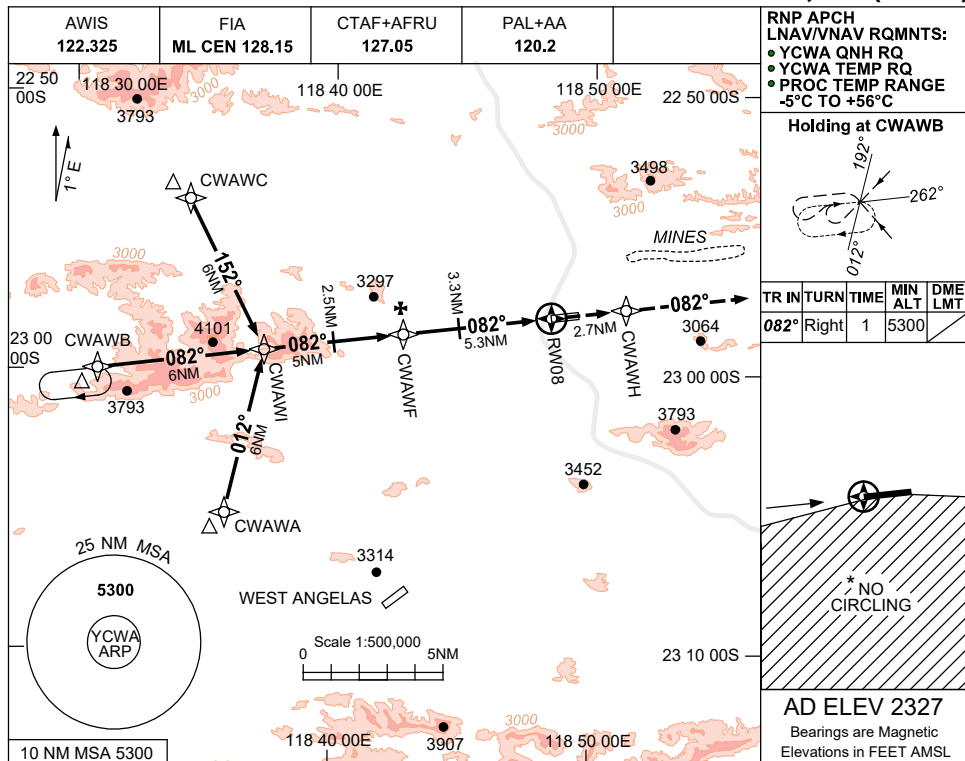


USE QNH

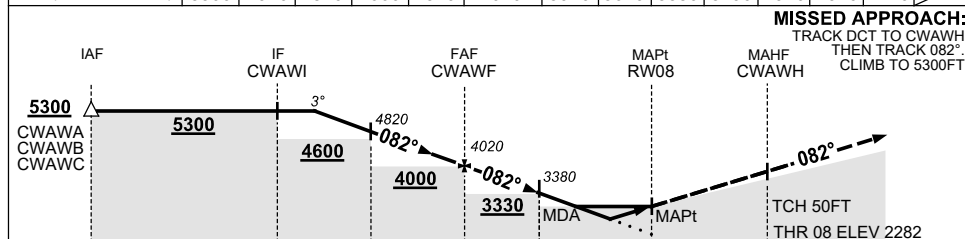
RNP RWY 08

30 NOV 2023

COONDEWANNA, WA (YCWA)



NM TO NEXT WPT	4	3	2.5	2	1	CWAWF	5	4	3.3	3	2	1.9	1.2	RW08
ALT (3° APCH PATH)	5300	4970	4820	4660	4340	CWAWF	4020	3920	3610	3380	3290	2970	2940	2710



**NOTES**

1. MAX IAS:  
INITIAL : 230KT.
- \*2. NO CIRCLING SOUTH OF RWY 08/26.
3. BLASTING OPS (SEE ERSA)
4. APCH PATH ANGLE DOES NOT COINCIDE WITH PAPI ON GLIDE SLOPE INDICATION.
5. COLOUR: SEE SPEC NOTICES.

CATEGORY	A	B	C	D
LNAV/VNAV		2710 (428-2.4)		
LNAV		2940 (658-3.7)		
CIRCLING *	3340 (1013-2.4)		3700 (1373-4.0)	4160 (1833-5.0)
ALTERNATE	(1513-4.4)		(1873-6.0)	(2333-7.0)

Changes: CHART TITLE, PBN SPECIFICATION BOX, Editorial.

CWAGN01-177