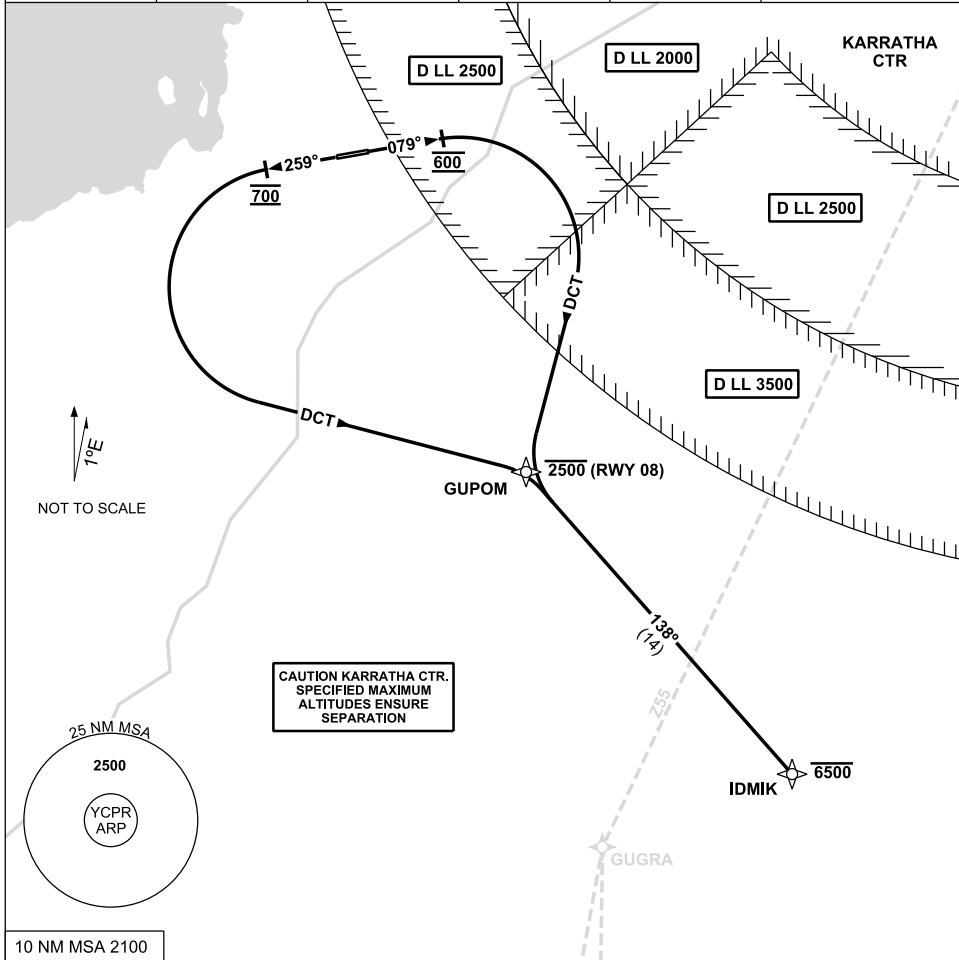


STANDARD INSTRUMENT DEPARTURE (SID)  
 IDMIK ONE DEPARTURE (RNAV) - RWY 08 & 26  
**CAPE PRESTON, WA (YCPR)**

13 JUN 2024

FIA ML CEN 122.4	CTAF+AFRU 132.05	AFRU+PAL 132.05		Bearings are Magnetic Elevations in FEET AMSL
---------------------	---------------------	--------------------	--	--



**IDMIK ONE DEPARTURE (RNAV)**

**RWY 08**

- Track 079°
- **AT 600FT** turn **RIGHT** track DCT to GUPOM  
Cross GUPOM AT or BLW 2500FT
- Track 138° to IDMIK  
Cross IDMIK AT or BLW 6500FT
- Intercept flight planned route

**RWY 26**

- Track 259°
- **AT 700FT** turn **LEFT** track DCT to GUPOM
- Track 138° to IDMIK  
Cross IDMIK AT or BLW 6500FT
- Intercept flight planned route

Changes: WPT VETEL renamed GUGRA

CPRDP01-179