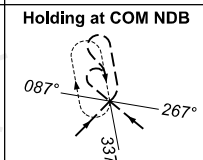
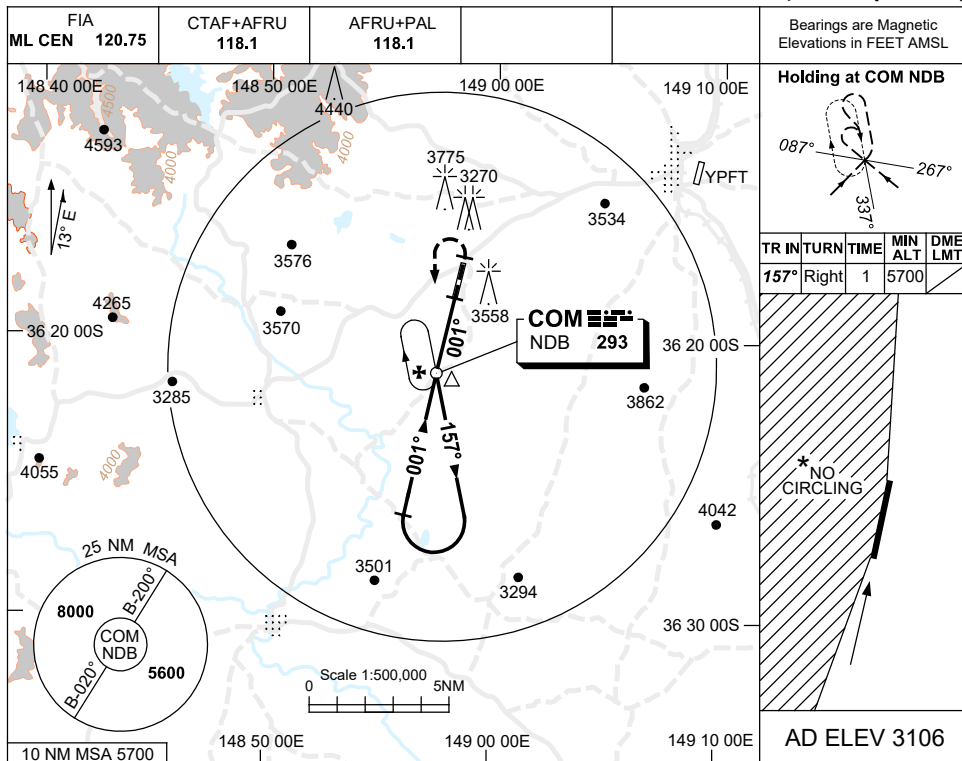
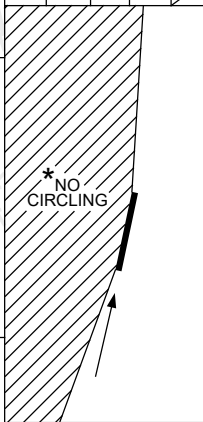


**USE QNH NDB-Y RWY 36
COOMA-SNOWY MOUNTAINS, NSW (YCOM)**

5 SEP 2024



TR	IN	TURN	TIME	MIN ALT	DME LMT
157°	Right	1	1	5700	



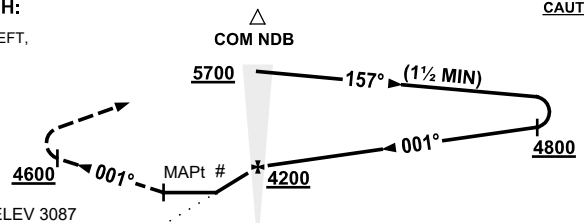
AD ELEV 3106

NDB to MAPt	GS (KNOTS)	60	70	80	90	100	110	120	130				
	TIME (MIN:SEC)	2:45	2:22	2:04	1:50	1:39	1:30	1:23	1:17				

MISSED APPROACH:

TRACK 001°
PASSING 4600ft TURN LEFT,
TRACK TO NDB.
CLIMB TO 5700ft.

CAUTION: AERODROME 2.7 NM NORTH OF THE NDB.



NOTES

CATEGORY	A	B	D
S-I NDB	3940 (853-4.2)		NOT APPLICABLE
CIRCLING *	4060 (954-2.4)		
ALTERNATE	(1454-4.4)		

- *1. NO CIRCLING WEST OF RWY 18 / 36.
- #2. GRADIENT AFTER FAF 6.4% (390FT/NM).
- 3. AWIS (PHONE) 02 9353 6414
- 4. COLOUR: SEE SPEC NOTICES.

Changes: LIT OBSTACLES, Editorial.

COMNB02-180