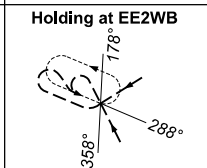
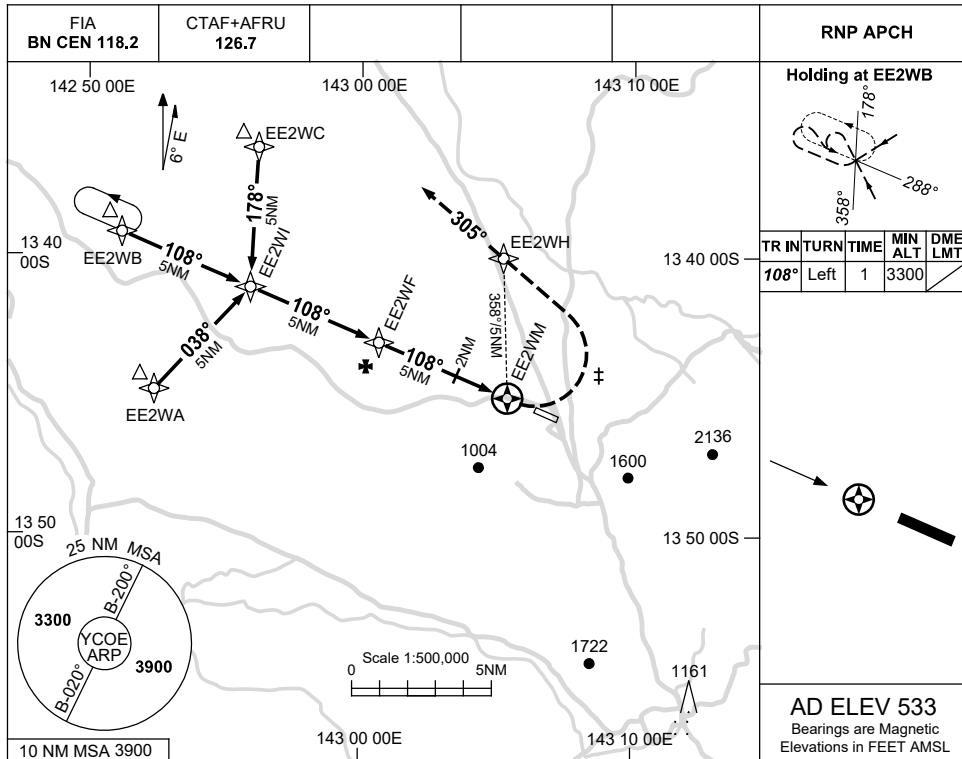
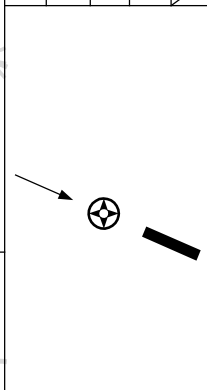


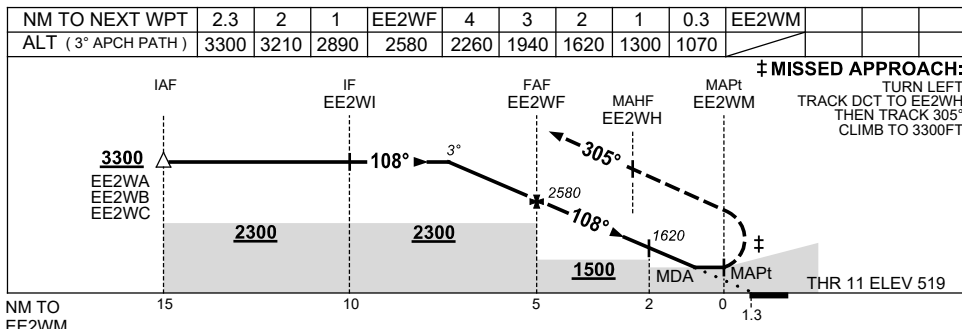
13 JUN 2024



TR	IN	TURN	TIME	MIN	DME
				ALT	LMT
108°	Left	1	3300		



AD ELEV 533  
Bearings are Magnetic  
Elevations in FEET AMSL



NOTES

CATEGORY	A	B	C	D
LNAV	1070 (551-3.1)			NOT APPLICABLE
CIRCLING	1710 (1177-2.4)	2470 (1937-4.0)		
ALTERNATE	(1677-4.4)		(2437-6.0)	

- 1. MAX IAS: INITIAL : 210KT.
- ‡ MAP TURN : 180KT.

Changes: THR RWY 11 MOVED, PROFILE, LNAV MNM.

COEGN01-179