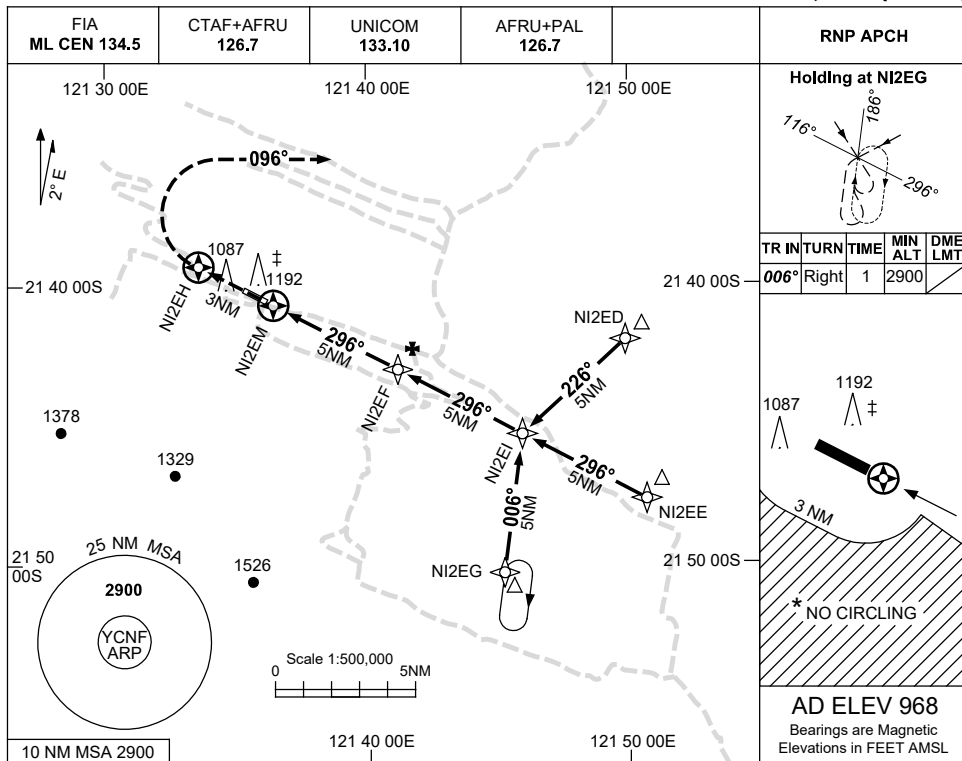


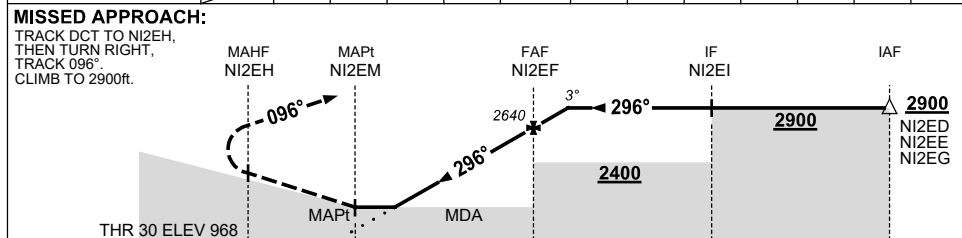
USE QNH

RNP RWY 30  
NIFTY, WA (YCNF)

13 JUN 2024



NM TO NEXT WPT	NI2EM	1.3	2	3	4	NI2EF	0.8			
ALT (3° APCH PATH)		1470	1680	2000	2320	2640	2900			



**NOTES**

- MAX IAS: INITIAL : 210KT.
- NO CIRCLING BEYOND 3NM S OF RWY 12/30.

‡ **CAUTION:** UNMARKED/UNLIT 1192FT TWR 016°/ 0.4NM FROM ARP.

CATEGORY	A	B	C	D
LNAV	1470 (502-2.8)			NOT APPLICABLE
CIRCLING	1590 (622-2.4)	1690 (722-4.0)		
ALTERNATE	(1122-4.4)		(1222-6.0)	

Changes: CIRCLING MINIMA, ALTERNATE MINIMA, OBSTACLE ELEVATION, WAYPOINT NAMES.

CNFGN02-179