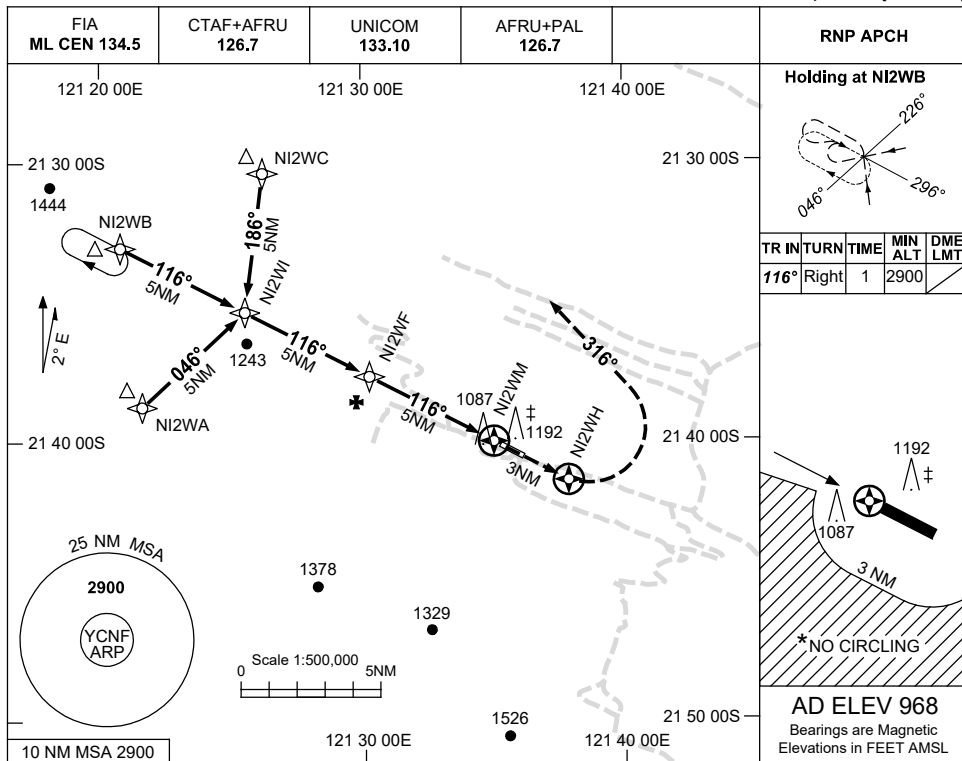


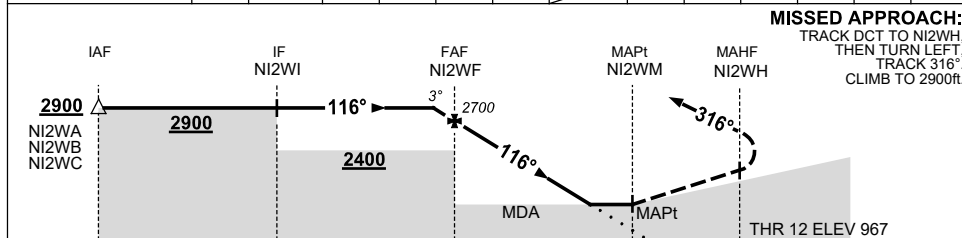
USE QNH

RNP RWY 12
NIFTY, WA (YCNF)

13 JUN 2024



NM TO NEXT WPT	0.6	NI2WF	4	3	2	1.3	NI2WM						
ALT (3° APCH PATH)	2900	2700	2380	2060	1740	1530							



MISSED APPROACH:
TRACK DCT TO NI2WH,
THEN TURN LEFT,
TRACK 316°.
CLIMB TO 2900ft.

CATEGORY	A	B	C	D
LNAV	1530 (562-3.2)			NOT APPLICABLE
CIRCLING	1590 (622-2.4)	1690 (722-4.0)		
ALTERNATE	(1122-4.4)		(1222-6.0)	

NOTES

1. MAX IAS:
INITIAL : 210KT
HOLDING: 200KT.
- * 2. NO CIRCLING BEYOND 3NM S OF RWY 12/30.

‡ **CAUTION:**
UNMARKED/UNLIT
1192FT TWR 016°/
0.4NM FROM ARP.

Changes: CIRCLING MINIMA, ALTERNATE MINIMA, OBSTACLE ELEVATION, WAYPOINT NAMES. CNFGN01-179