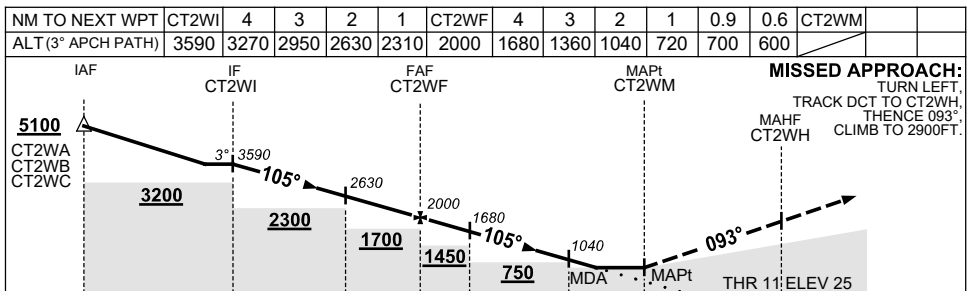
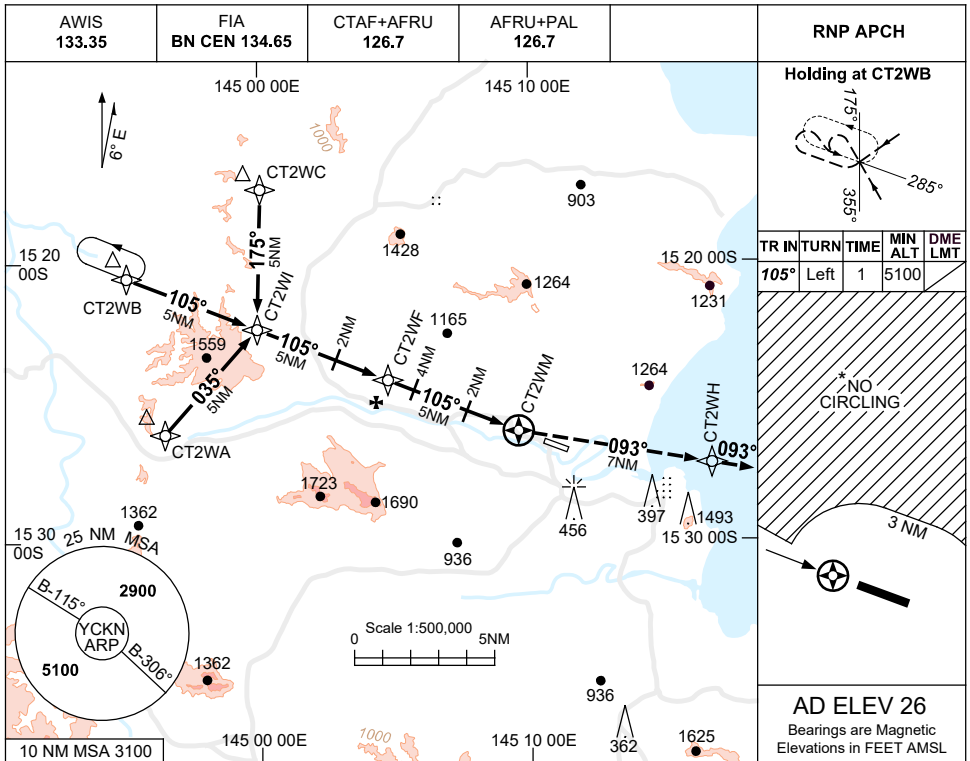


USE QNH

RNP RWY 11

1 DEC 2022

COOKTOWN, QLD (YCKN)



CATEGORY	A	B	C	D
LNAV (2.5% MAP)		700 (674-3.8)		NOT APPLICABLE
LNAV (3.1% MAP)#		600 (574-3.2)		
CIRCLING *	1080 (1054-2.4)	1500 (1474-4.0)		
ALTERNATE	(1554-4.4)	(1974-6.0)		

NOTES

- MAX IAS: INITIAL : 210KTS.
- NO CIRCLING IN SECTOR NORTHWEST OF RWY 11 & RWY 29 BEYOND 3NM.
- MIN MAP GRAD 3.1% TO 1100FT, THEN 2.5%.
- COLOUR: SEE SPEC NOTICES.

Changes: DIST/ALT TABLE.

CKNGN01-173