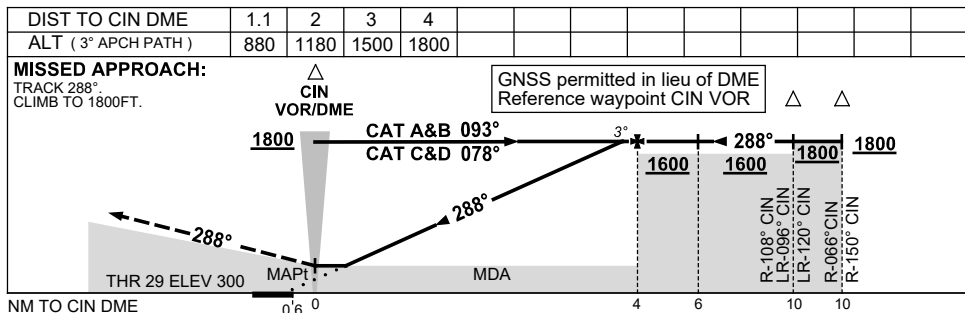
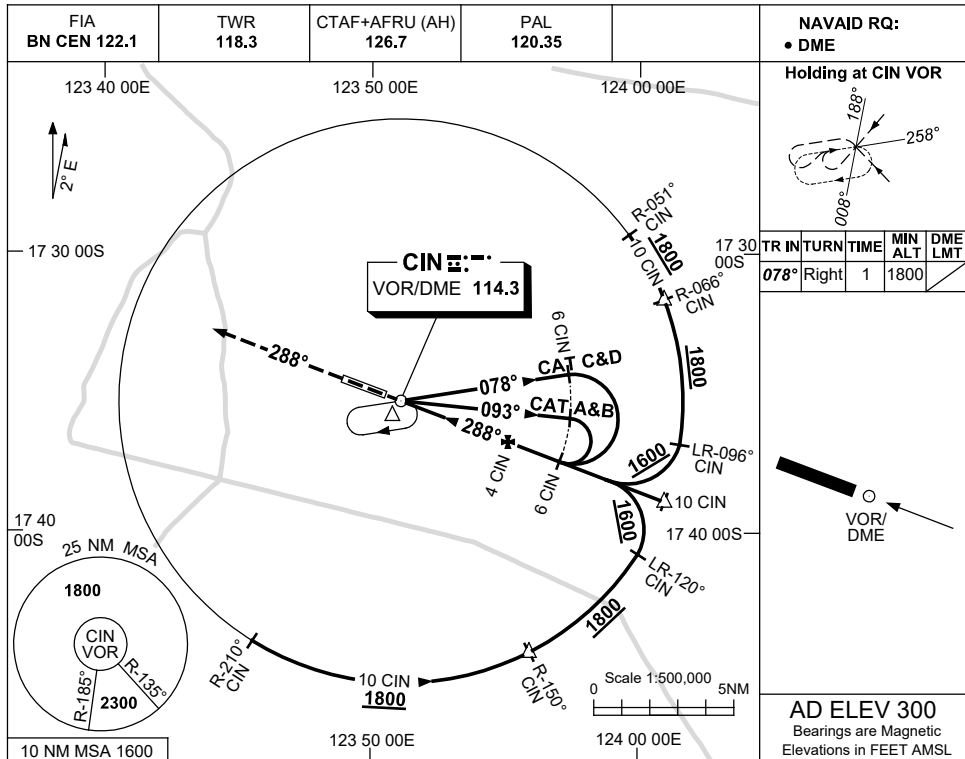


USE QNH

VOR-Z RWY 29
CURTIN, WA (YCIN)

7 NOV 2019



NOTES

CATEGORY	A	B	C	D
S-I VOR/DME	880 (580-3.3)			
CIRCLING	930 (630-2.4)	1030 (730-4.0)	1090 (790-5.0)	
ALTERNATE	(1130-4.4)	(1230-6.0)	(1290-7.0)	

- MAX IAS:
INITIAL : 210KT.
- AWIS (PHONE)
08 6216 2609

Changes: PAL, CTAF-AFRU.

CINVO04-161