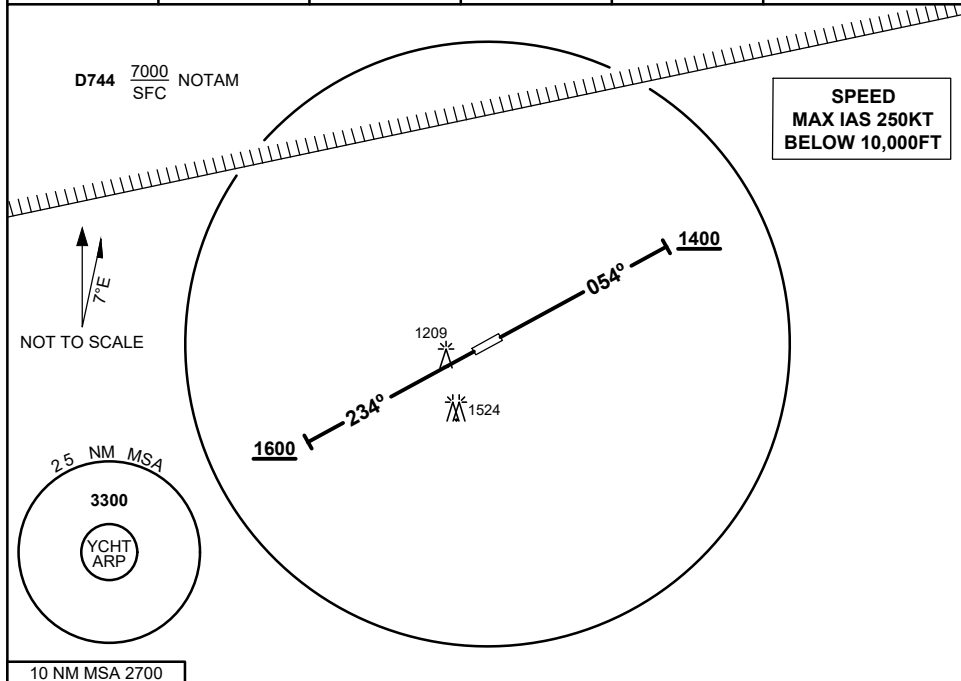


**STANDARD INSTRUMENT DEPARTURES (SID)
 CHARTERS TOWERS ONE DEPARTURE
 CHARTERS TOWERS, QLD (YCHT)**

8 SEP 2022

FIA BN CEN 120.55	CTAF + AFRU 126.7	AFRU + PAL 126.7			Bearings are Magnetic Elevations in FEET AMSL
-----------------------------	-----------------------------	----------------------------	--	--	--



10 NM MSA 2700

CHARTERS TOWERS ONE DEPARTURE

RWY 06

- GRAD 6.4% to 1200FT, thence 3.3%
- Track 054°
- AT or ABV 1400FT turn as required
- Continue climb to 3300FT
- Intercept flight plan route

RWY 24

- GRAD 4.4% to 1600FT, thence 3.3%
- Track 234°
- AT or ABV 1600FT turn as required
- Continue climb to 3300FT
- Intercept flight plan route

Changes: FROM SUP H46/22

CHTDP01-172