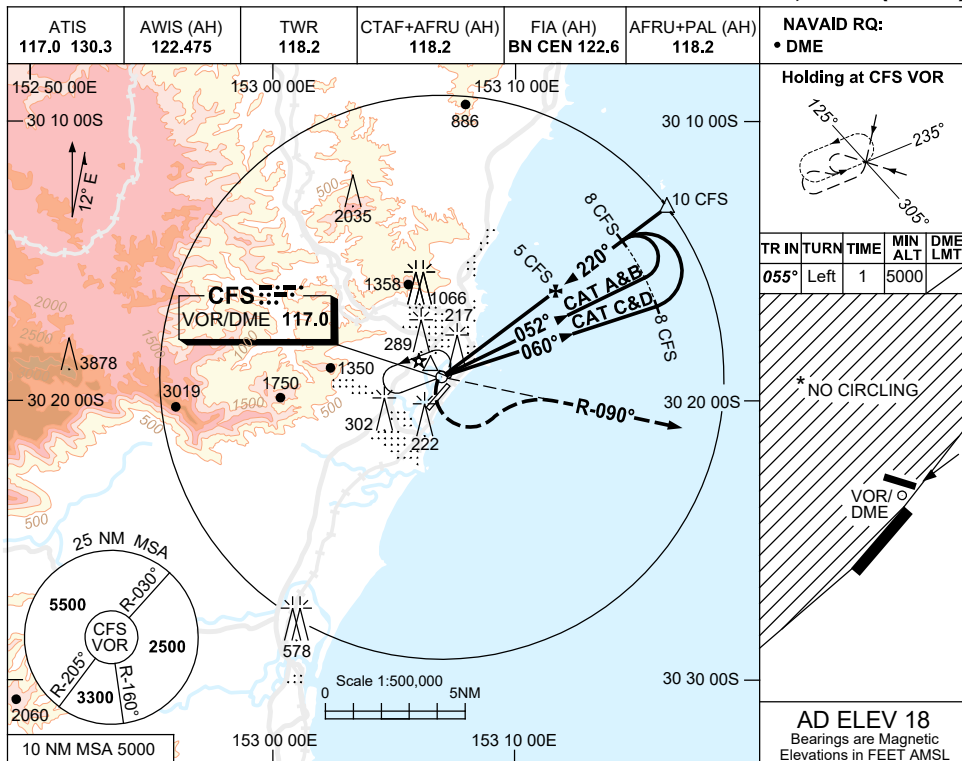


USE QNH

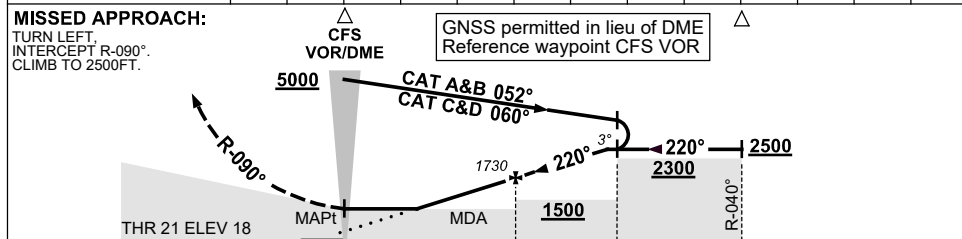
VOR-Z RWY 21

27 FEB 2020

COFFS HARBOUR, NSW (YCFS)



DIST TO CFS DME	1.8	2	3	4	5	6	7	8	9	10			
ALT (3° APCH PATH)	680	770	1090	1410	1730	2040	2360	2680	3000	3320			



NM TO CFS DME 0 5 8 10

NOTES

1. MAX IAS:
INITIAL : 190KT.
MAP TURN: 190KT.
HOLDING : 210KT.
- *2. NO CIRCLING WEST OF RWY 03/21.
3. COLOUR: SEE SPEC NOTICES.

CAUTION

DISUSED RWY (TWY E) NTH OF RWY 21 THR.

CATEGORY	A	B	C	D
S-I VOR/DME	680 (662-3.8)			
CIRCLING *	800 (782-2.4)		890 (872-4.0)	
ALTERNATE	(1282-4.4)		(1372-7.0)	

Changes: FROM SUP H85/19, COORD FMT.

CFSV003-162