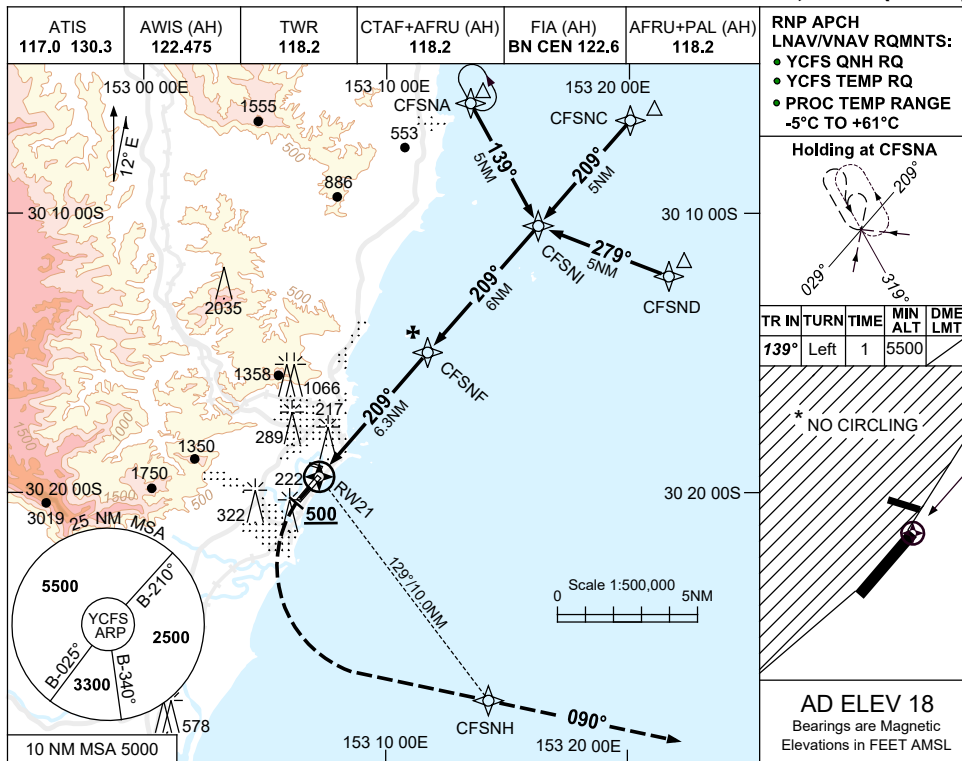


USE QNH

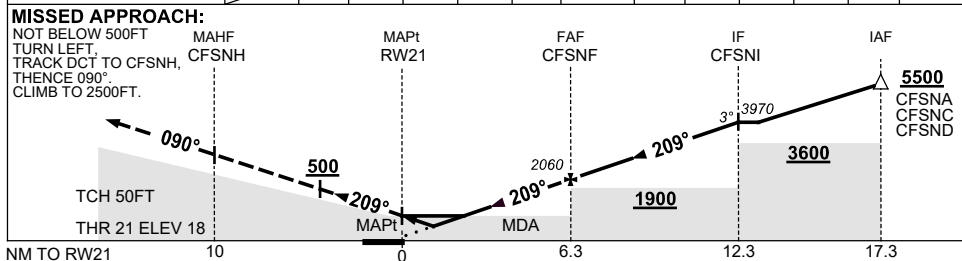
RNP RWY 21

2 DEC 2021

**COFFS HARBOUR, NSW (YCFS)**



NM TO NEXT WPT	RW21	1.4	3	4	5	CFSNF	1	2	3	4	5	CFSNI	
ALT (3° APCH PATH)		500	680	1020	1340	1660	2060	2380	2700	3010	3330	3650	3970



**NOTES**

- MAX IAS: INITIAL : 210KT.
- NO CIRCLING WEST OF RWY 03/21.
- PROC PARTIALLY OCTA.
- COLOUR: SEE SPEC NOTICES.

**CAUTION**

DISUSED RWY (TWY E) NTH OF RWY 21 THR.

CATEGORY	A	B	C	D
LNAV/VNAV		500 (482-2.7)		
LNAV		680 (662-3.8)		
CIRCLING*	800 (782-2.4)		890 (872-4.0)	890 (872-5.0)
ALTERNATE	(1282-4.4)		(1372-6.0)	(1372-7.0)

Changes: CHART TITLE, PBN SPECIFICATION BOX.

CFSGN02-169