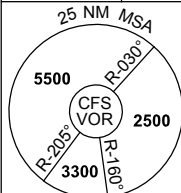


# DME or GNSS ARRIVAL PROCEDURES COFFS HARBOUR, NSW (YCFS) Page 1

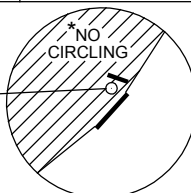
28 FEB 2019

ATIS 117.0 130.3	AWIS (AH) 122.475	TWR 118.2	CTAF+AFRU (AH) 118.2	FIA (AH) BN CEN 122.6	AFRU+PAL (AH) 118.2	Bearings are Magnetic Elevations in FEET AMSL
---------------------	----------------------	--------------	-------------------------	--------------------------	------------------------	--



## DME USING CFS DME REFERENCE WAYPOINT CFS VOR

CFS VOR/DME 117.0



\* NO CIRCLING W  
OF RWY 03/21.

AD ELEV 18

<b>SECTOR A</b> 											<b>MISSED APPROACH:</b> TURN LEFT, INTERCEPT 090° OUTBOUND FROM CFS VOR. CLIMB TO 2500FT.
	NM TO CFS VOR		30	15	7	6	5	3	0		
<b>CIRCLING MINIMA</b>		A,B: 1920-2.4		C: 1920-4.0		D: 1920-5.0					
NM TO CFS VOR		6.1	5	4	3	2	1.8				
ALT (3° APCH PATH)		3300	2950	2630	2310	1990	1920				

<b>SECTOR B</b> 											<b>MISSED APPROACH:</b> TURN RIGHT, INTERCEPT 090° OUTBOUND FROM CFS VOR. CLIMB TO 2500FT.					
	NM TO CFS VOR		30	19	15	14	9	6	5	2		0				
<b>CIRCLING MINIMA</b>		A,B: 1190-2.4		C: 1190-4.0		D: 1190-5.0										
NM TO CFS VOR		12.5	12	11	10	9	8	7	6	5	4	3	2	1.8		
ALT (3° APCH PATH)		4600	4430	4120	3800	3480	3160	2840	2520	2200	1890	1570	1250	1190		

<b>SECTOR C</b> 											<b>MISSED APPROACH:</b> TURN RIGHT, INTERCEPT 090° OUTBOUND FROM CFS VOR. CLIMB TO 2500FT.  MAX IAS: 230KT UNTIL TRACKING 090°. OUTBOUND FROM CFS VOR.
	NM TO CFS VOR		30	15	9	6	3	0			
<b>CIRCLING MINIMA</b>		A,B: 1460-2.4		C: 1500-4.0		D: 1500-5.0					
NM TO CFS VOR		6.1	5	4	3	2.7	2.6				
ALT (3° APCH PATH)		2600	2250	1930	1610	1500	1460				

Changes: AWIS 122.475 CMSD, AWIS PH DELETED, Editorial.

CFSDG01-158