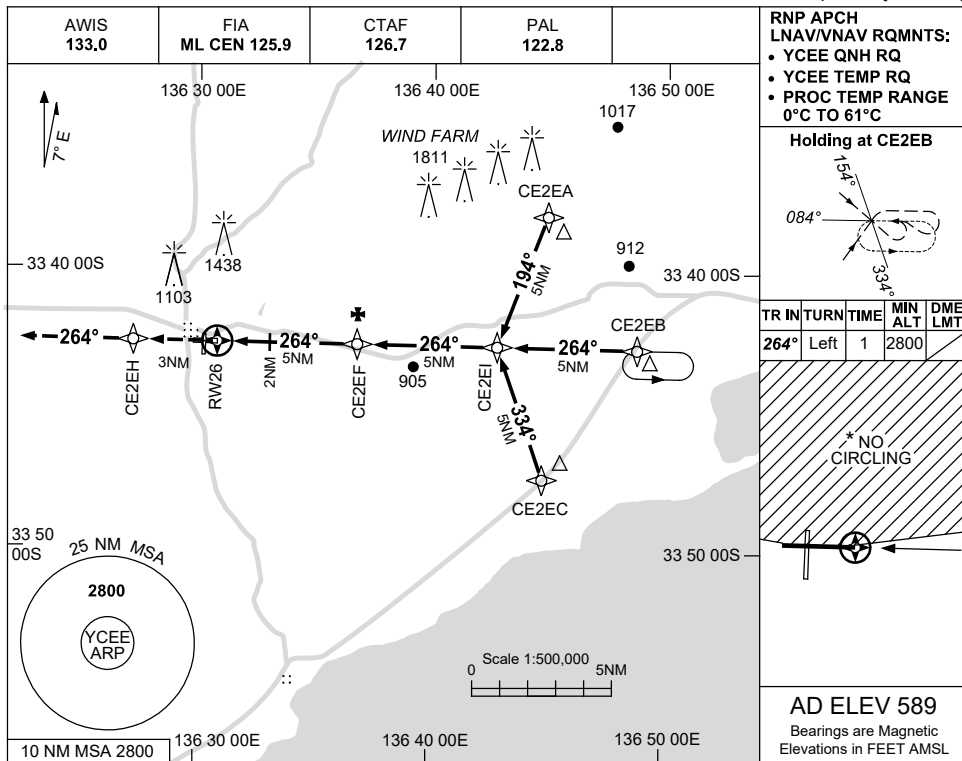


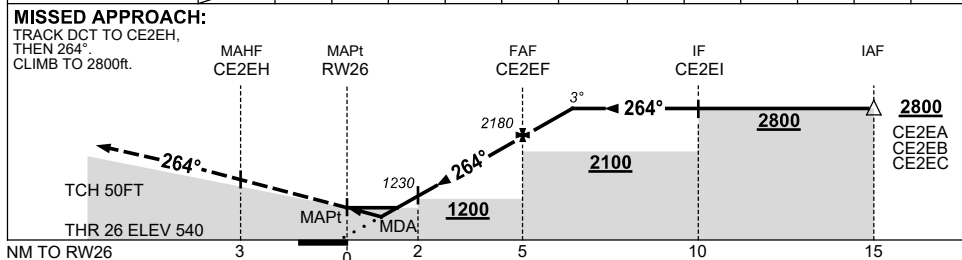
USE QNH

RNP RWY 26
CLEVE, SA (YCEE)

5 SEP 2024



NM TO NEXT WPT	RW26	1.3	1.9	2	3	4	CE2EF	1	1.9			
ALT (3° APCH PATH)		990	1190	1230	1550	1860	2180	2500	2800			



NOTES

CATEGORY	A	B	C	D
LNAV/VNAV		990 (450-2.5)		NOT APPLICABLE
LNAV		1190 (650-3.7)		
CIRCLING *	1440 (851-2.4)		1530 (941-4.0)	
ALTERNATE	(1351-4.4)		(1441-6.0)	

- MAX IAS: INITIAL : 230KT.
- NO CIRCLING NORTH OF RWY 08 / 26.

Changes: WPT NAMING CONVENTION, OBSTACLES.

CEEGN01-180