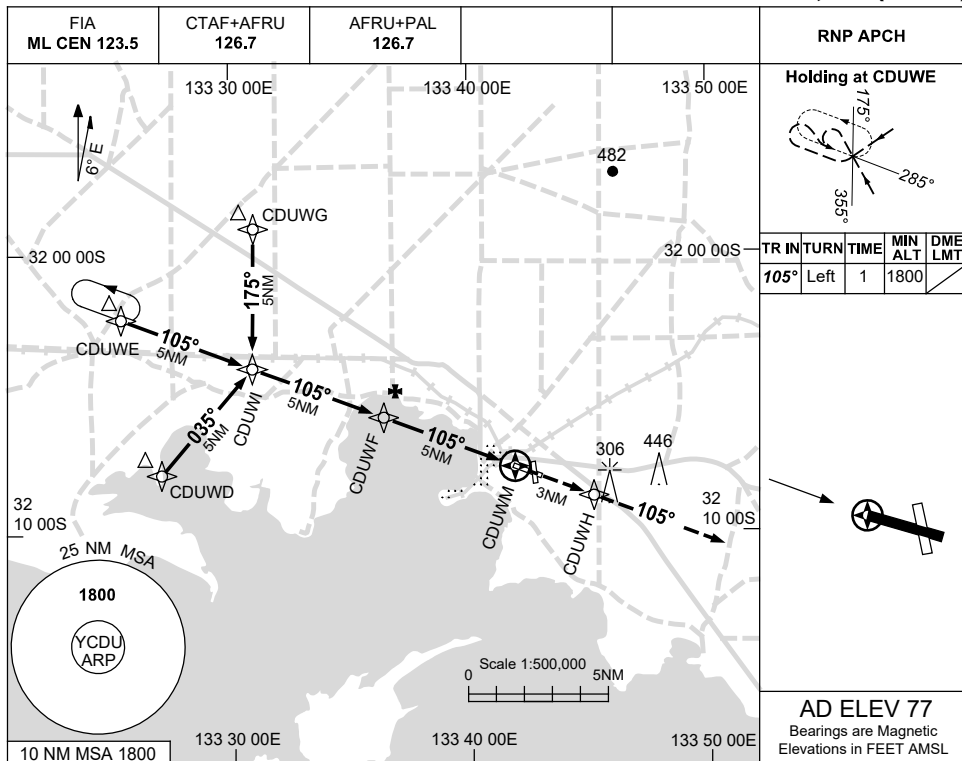


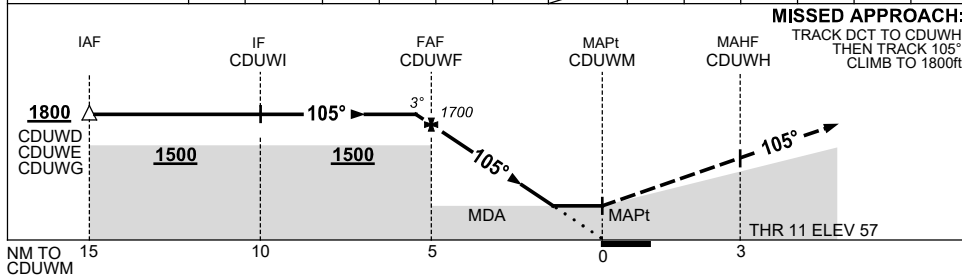
USE QNH

RNP RWY 11  
CEDUNA, SA (YCDU)

21 MAR 2024



NM TO NEXT WPT	0.3	CDUWF	4	3	2	1.6	CDUWM				
ALT (3° APCH PATH)	1800	1700	1380	1060	740	610					



**NOTES**

CATEGORY	A	B	C	D
LNAV	610 (553-3.1)			NOT APPLICABLE
CIRCLING	710 (633-2.4)	940 (863-4.0)		
ALTERNATE	(1133-4.4)	(1363-6.0)		

- MAX IAS: INITIAL : 210KT.
- AWIS (PHONE) 08 8150 3801.

Changes: Editorial.

CDUGN02-178