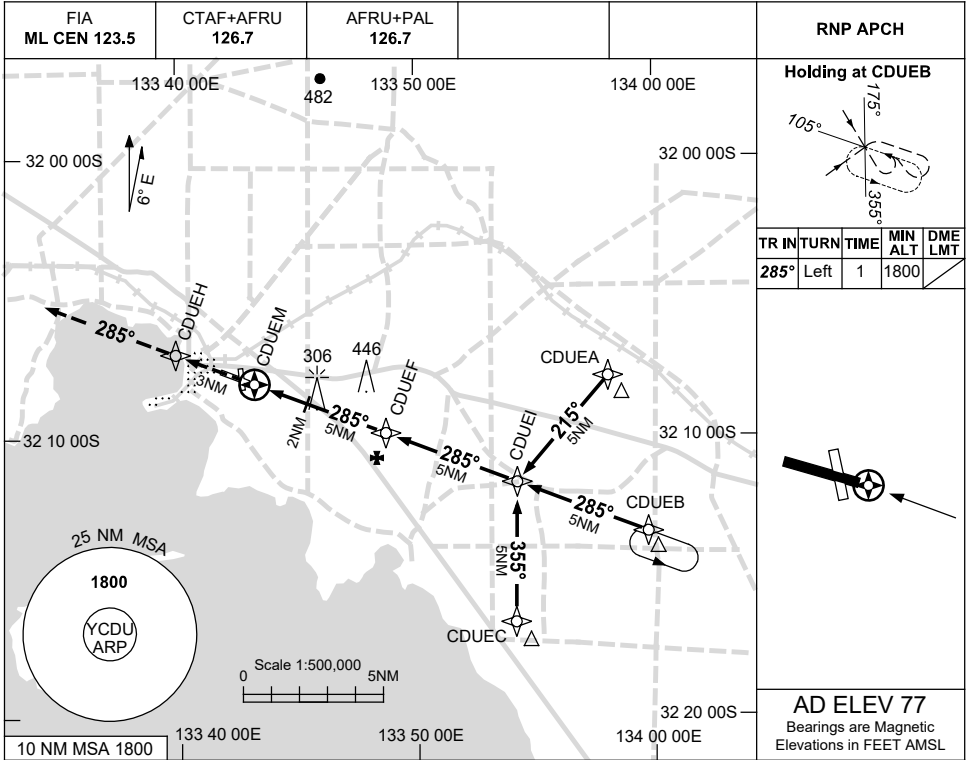


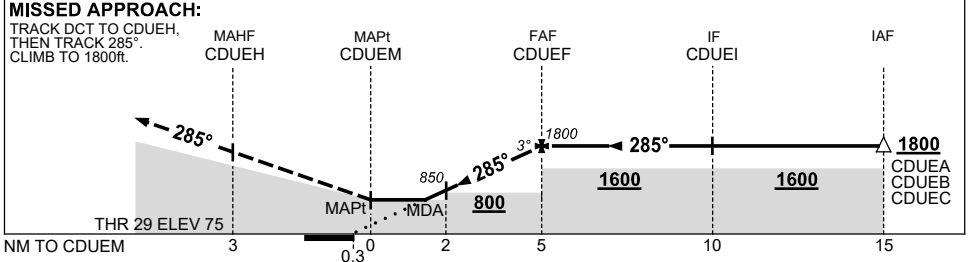
USE QNH

RNP RWY 29
CEDUNA, SA (YCDU)

21 MAR 2024



NM TO NEXT WPT	CDUEM	1.5	2	3	4	CDUEF			
ALT (3° APCH PATH)		680	850	1170	1490	1800			



NOTES

CATEGORY	A	B	C	D
LNAV	680 (603-3.4)			NOT APPLICABLE
CIRCLING	710 (633-2.4)	940 (863-4.0)		
ALTERNATE	(1133-4.4)		(1363-6.0)	

- MAX IAS: INITIAL : 210KT.
- AWIS (PHONE) 08 8150 3801.

Changes: Editorial.

CDUGN01-178