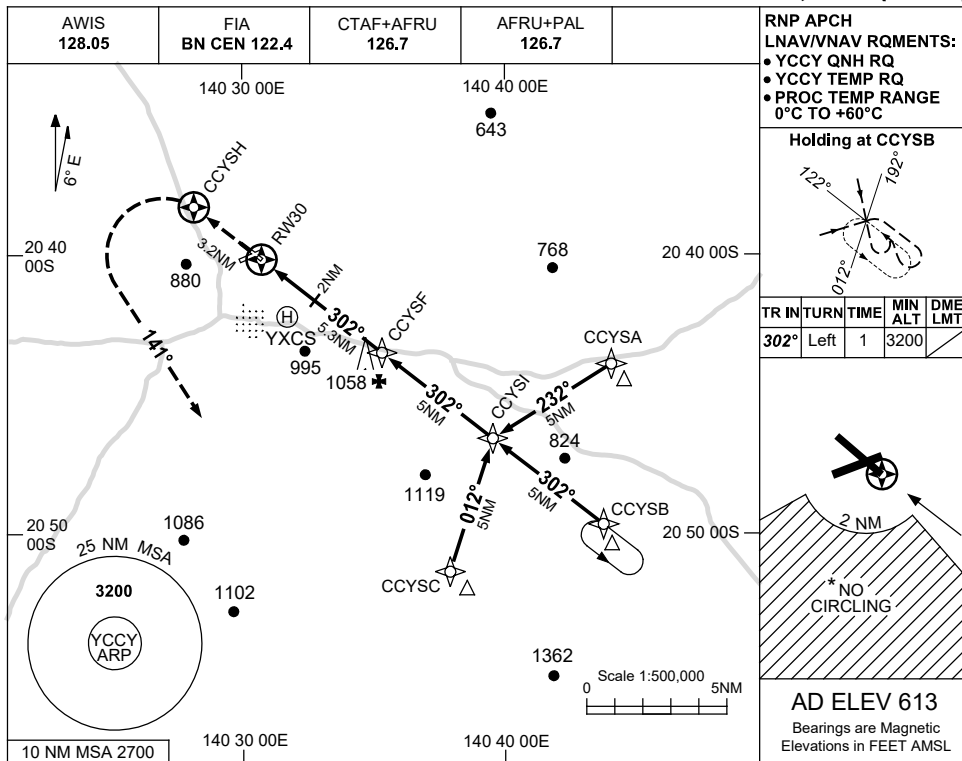


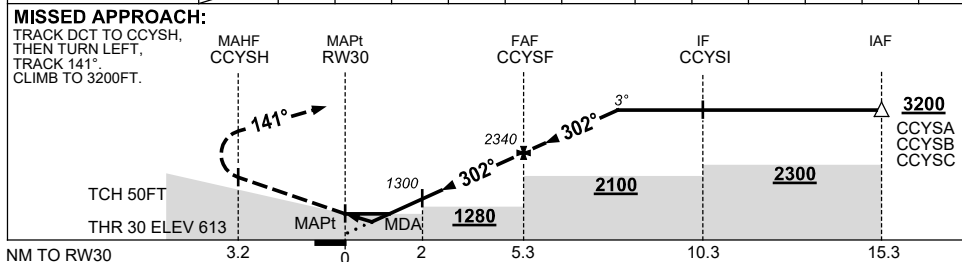
USE QNH

RNP RWY 30
CLONCURRY, QLD (YCCY)

16 JUN 2022



NM TO NEXT WPT	RW30	1	1.7	2	3	4	CCYSF	1	2	2.7		
ALT (3° APCH PATH)		990	1190	1300	1620	1940	2340	2660	2980	3200		



NOTES

CATEGORY	A	B	C	D	
LNAV/VNAV	990 (377-2.1)			NOT APPLICABLE	
LNAV	1190 (577-3.3)				
CIRCLING*	1570 (957-2.4)		1570 (957-4.0)		
ALTERNATE	(1457-4.4)		(1457-6.0)		

1. MAX IAS:
INITIAL : 210KT.
- * 2. NO CIRCLING IN SECTOR SOUTH OF RWYS 06 AND 30 BEYOND 2NM.

Changes: CHART TITLE, PBN SPECIFICATION BOX.

CCYGN02-171