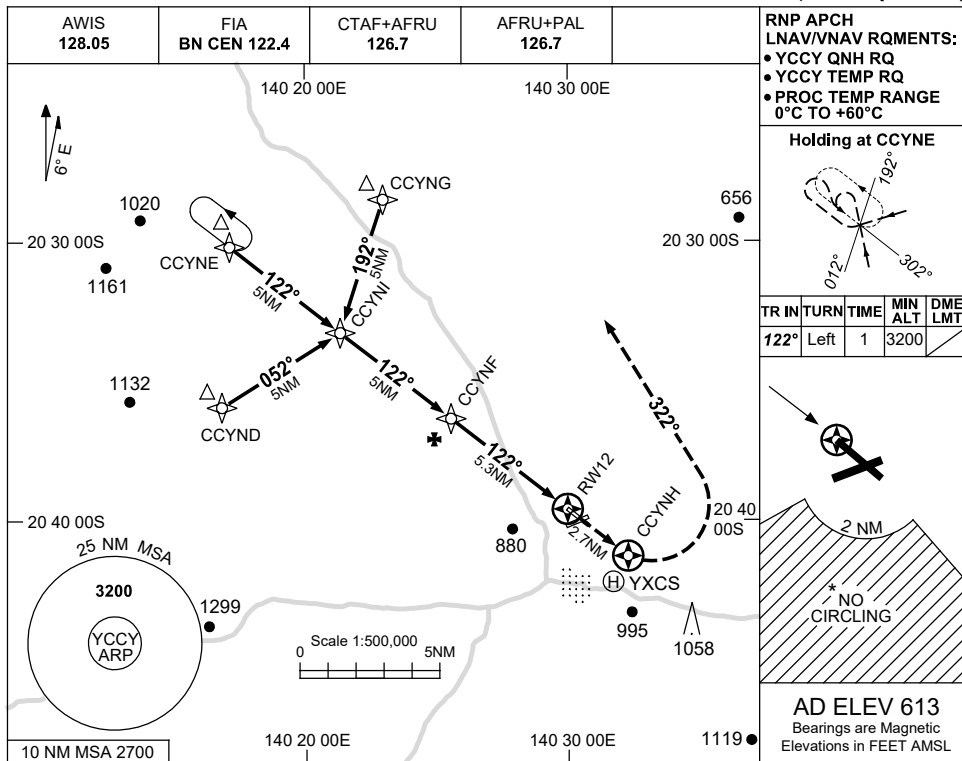


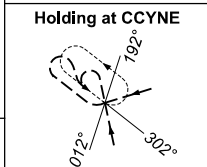
USE QNH

RNP RWY 12
CLONCURRY, QLD (YCCY)

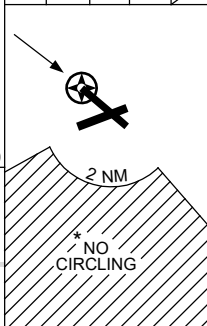
16 JUN 2022



RNP APCH
LNAV/VNAV RQMENTS:
• YCCY QNH RQ
• YCCY TEMP RQ
• PROC TEMP RANGE
0°C TO +60°C

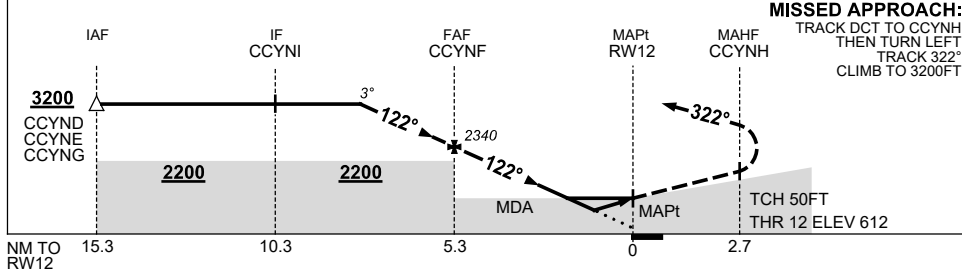


| TR IN | TURN | TIME | MIN ALT | DME LMT |
|-------|------|------|---------|---------|
| 122° | Left | 1 | 3200 | |



AD ELEV 613
Bearings are Magnetic
Elevations in FEET AMSL

| NM TO NEXT WPT | 2.7 | 2 | 1 | CCYNF | 4 | 3 | 2 | 1.8 | 1.2 | RWY12 |
|--------------------|------|------|------|-------|------|------|------|------|------|-------|
| ALT (3° APCH PATH) | 3200 | 2980 | 2660 | 2340 | 1940 | 1620 | 1300 | 1250 | 1060 | |



MISSED APPROACH:
TRACK DCT TO CCYNH,
THEN TURN LEFT,
TRACK 322°,
CLIMB TO 3200FT.

NOTES

| CATEGORY | A | B | C | D |
|------------|----------------|----------------|----------------|----------------|
| LNAV/VNAV | | 1060 (448-2.5) | | NOT APPLICABLE |
| LNAV | | 1250 (637-3.6) | | |
| CIRCLING * | 1570 (957-2.4) | | 1570 (957-4.0) | |
| ALTERNATE | (1457-4.4) | | (1457-6.0) | |

- MAX IAS:
INITIAL : 210KT.
- * NO CIRCLING IN
SECTOR SOUTH OF
RWYS 06 AND 30
BEYOND 2NM.

Changes: CHART TITLE, PBN SPECIFICATION BOX.

CCYGN01-171