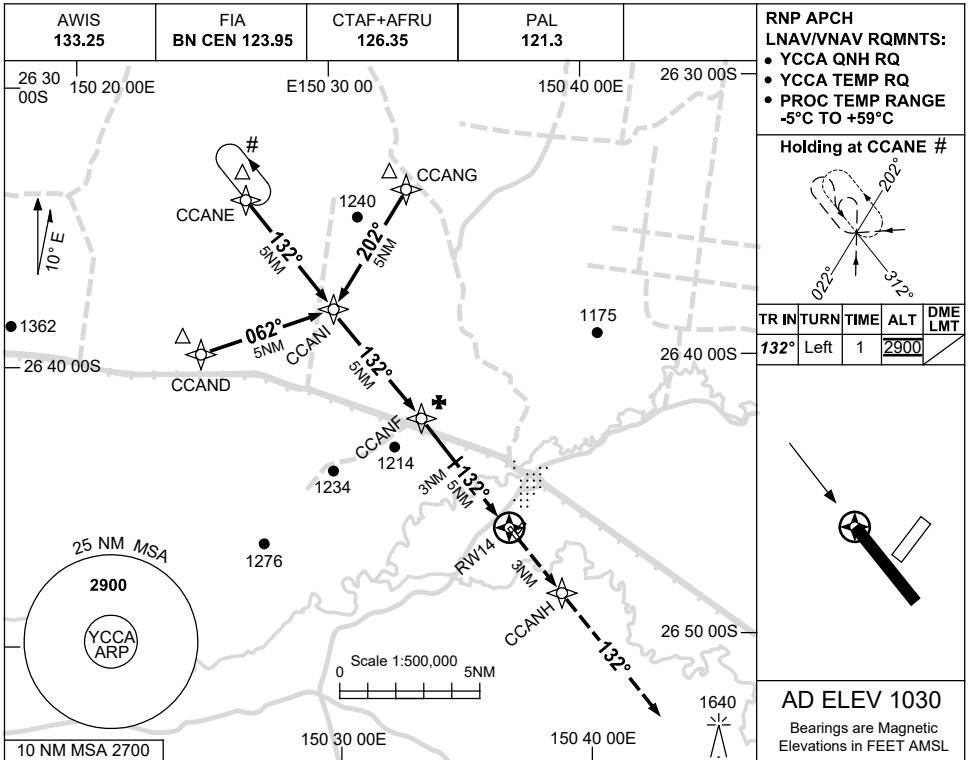


USE QNH

RNP RWY 14

28 NOV 2024

CHINCHILLA, QLD (YCCA)



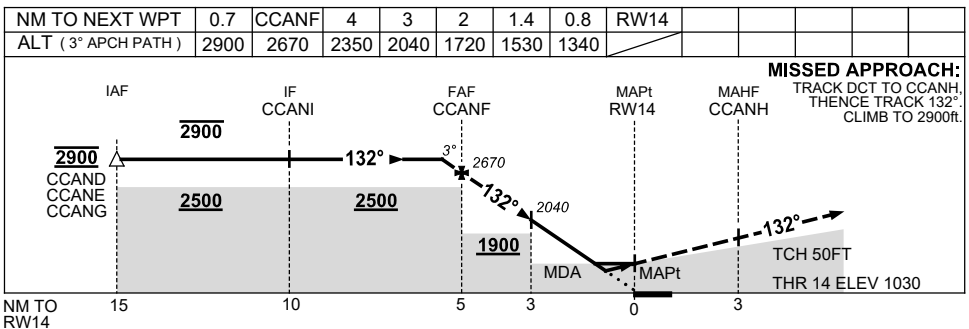
**RNP APCH LNAV/VNAV RQMNTS:**

- YCCA QNH RQ
- YCCA TEMP RQ
- PROC TEMP RANGE -5°C TO +59°C

**Holding at CCANE #**

TR	INTURN	TIME	ALT	DME	LMT
132°	Left	1	2900		

**AD ELEV 1030**  
Bearings are Magnetic  
Elevations in FEET AMSL



**NOTES**

CATEGORY	A	B	C	D
LNAV/VNAV	1340 (310-1.7)			
LNAV	1530 (500-2.8)			
CIRCLING	1630 (600-2.4)		1810 (780-4.0)	
ALTERNATE	(1100-4.4)		(1280-6.0)	

NOT APPLICABLE

- MAX IAS:  
INITIAL : 210KT.
- PROC OVERLAID BY  
YMLS RNP RWY 22  
HOLDING PATTERN AND  
INITIAL SEGMENTS.  
PRESCRIBED ALTITUDES  
ENSURE SEPARATION.

Changes: HOLDING ALT, NOTE 2.

CCAGN01-181