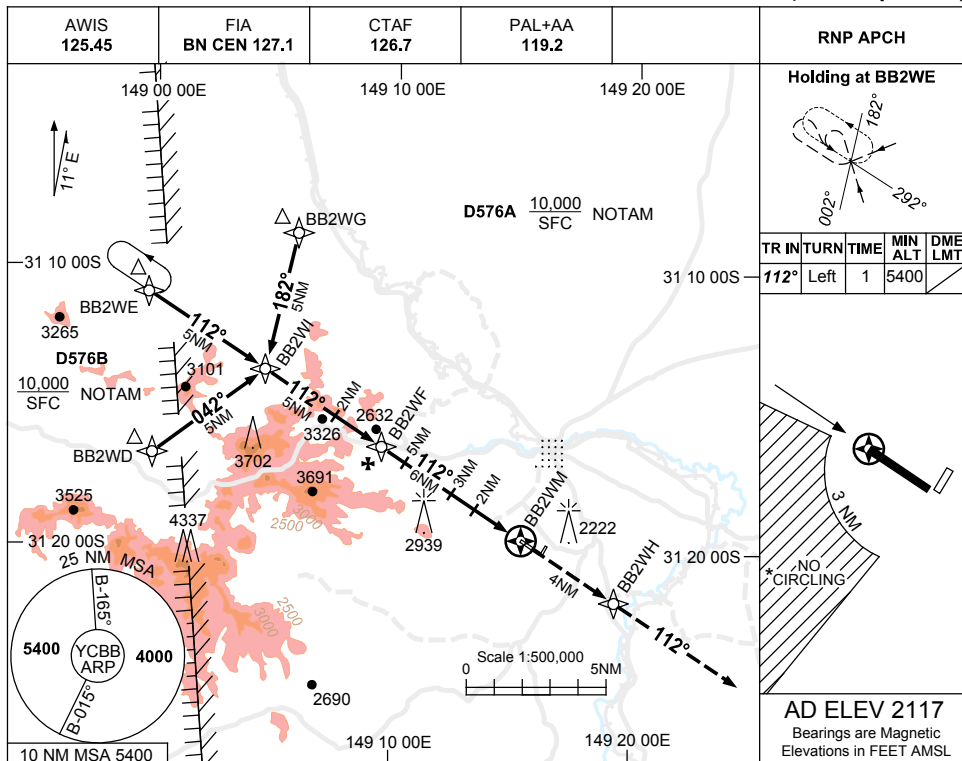


USE QNH

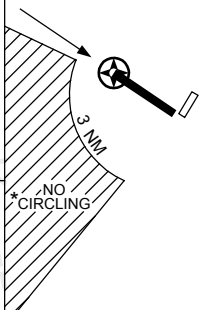
RNP RWY 11

28 NOV 2024

COONABARABRAN, NSW (YCBB)

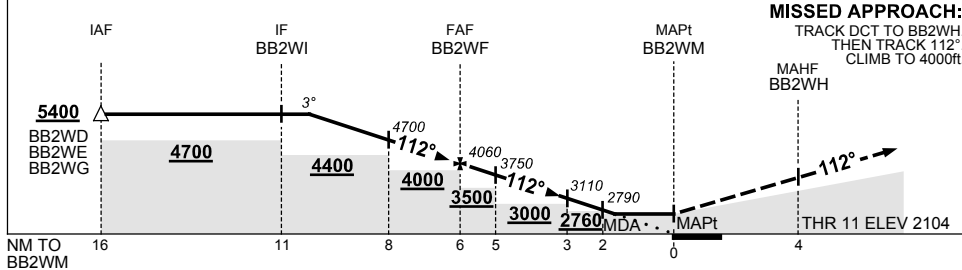


TR	IN	TURN	TIME	MIN ALT	DME LMT
112°	Left		1	5400	



AD ELEV 2117
Bearings are Magnetic
Elevations in FEET AMSL

NM TO NEXT WPT	4.2	4	3	2	1	BB2WF	5	4	3	2	1.6	BB2WM
ALT (3° APCH PATH)	5400	5340	5020	4700	4380	4060	3750	3430	3110	2790	2660	



MISSED APPROACH:
TRACK DCT TO BB2WH.
THEN TRACK 112°. CLIMB TO 4000ft.

NOTES

CATEGORY	A	B	C	D
LNAV	2660 (556-3.2)			NOT APPLICABLE
CIRCLING *	2900 (783-2.4)		3130 (1013-4.0)	
ALTERNATE	(1283-4.4)		(1513-6.0)	

- MAX IAS: INITIAL : 210KT.
- NO CIRCLING IN SECTOR SW OF RWY 11 & RWY 01 BEYOND 3NM.
- COLOUR SEE SPEC NOTICE.

Changes: OBSTACLES ELEVATION, WPT NAMING CONVENTION, SEGMENT MINIMUM SAFE ALTITUDES. CBBGN02-181