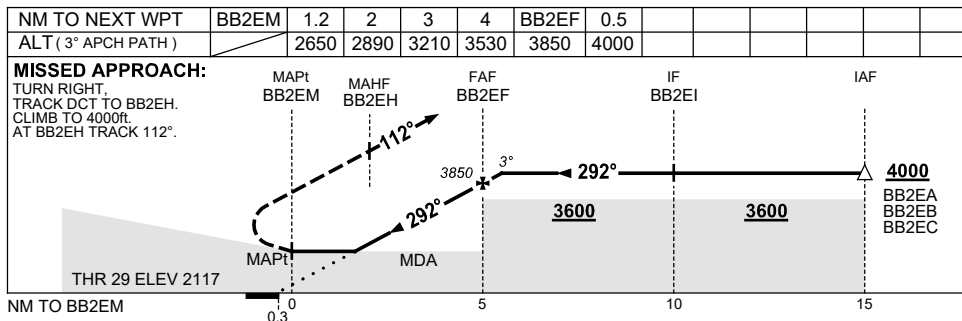
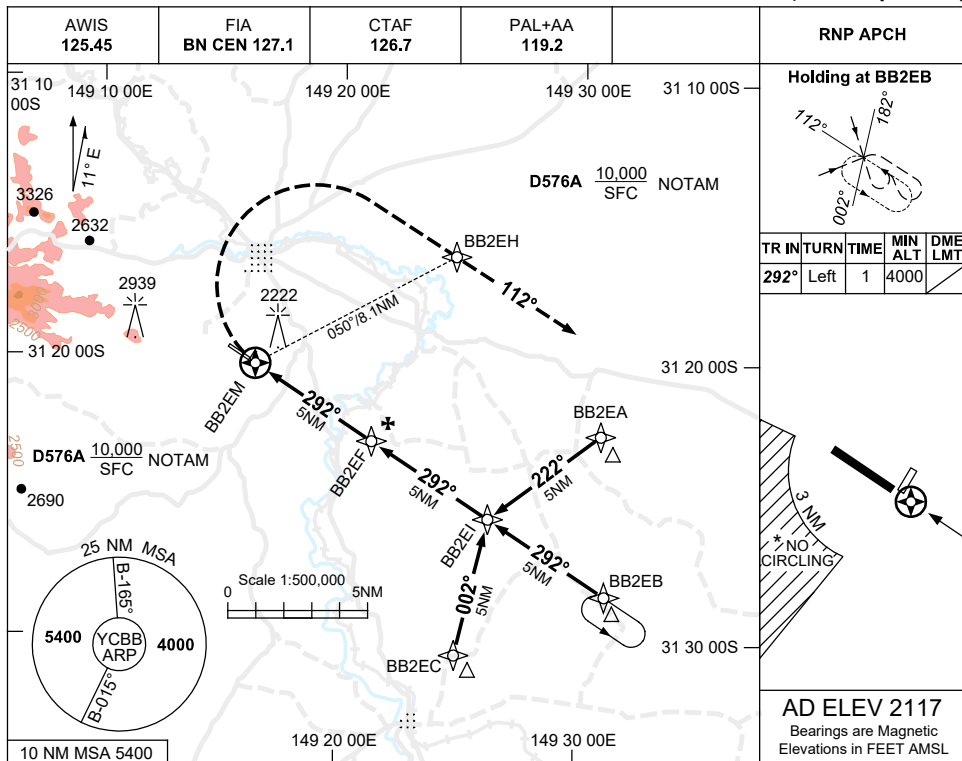


USE QNH

RNP RWY 29

28 NOV 2024

COONABARABRAN, NSW (YCBB)



NOTES

CATEGORY	A	B	C	D
LNAV	2650 (533-3.0)			NOT APPLICABLE
CIRCLING *	2900 (783-2.4)		3130 (1013-4.0)	
ALTERNATE	(1283-4.4)		(1513-6.0)	

1. MAX IAS: INITIAL : 210KT.
- * 2. NO CIRCLING IN SECTOR SW OF RWY 11 & RWY 01 BEYOND 3NM.
3. COLOUR SEE SPEC NOTICE.

Changes: OBSTACLE ELEVATION, WPT NAMING CONVENTION, Editorial.

CBBGN01-181