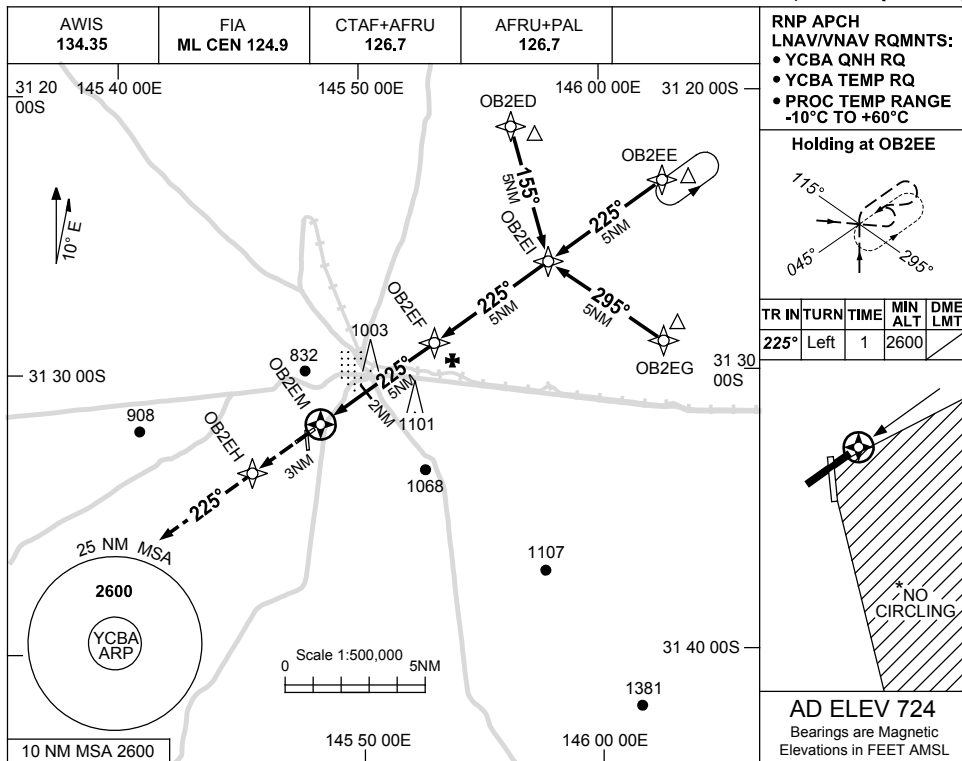


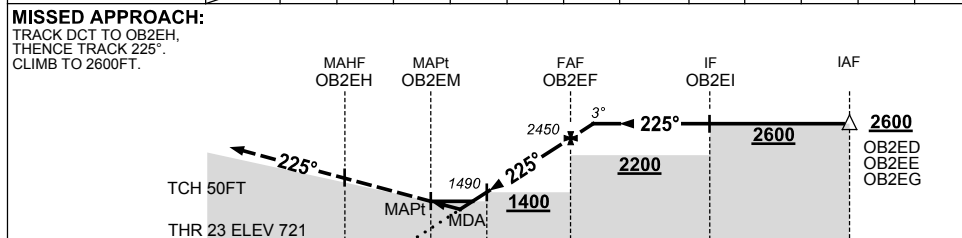
USE QNH

RNP RWY 23
COBAR, NSW (YCBA)

15 JUN 2023



NM TO NEXT WPT	OB2EM	0.7	1	1.5	2	3	4	OB2EF	0.5				
ALT (3° APCH PATH)		1080	1180	1340	1490	1810	2130	2450	2600				



NM TO OB2EM 3 0.3 2 5 10 15

NOTES

CATEGORY	A	B	C	D
LNAV/VNAV		1080 (359-2.0)		NOT APPLICABLE
LNAV		1340 (616-3.5)		
CIRCLING *	1390 (666-2.4)		1550 (826-4.0)	
ALTERNATE	(1166-4.4)		(1326-6.0)	

1. MAX IAS:
INITIAL : 210KT.
- * 2. NO CIRCLING
SOUTH-EAST OF
RWY 23 & RWY 35.

Changes: LNAV/VNAV MINIMA, SDF, NO CIRCLING AREA, WPT NAMING CONVENTION, Editorial.

CBAGN01-175