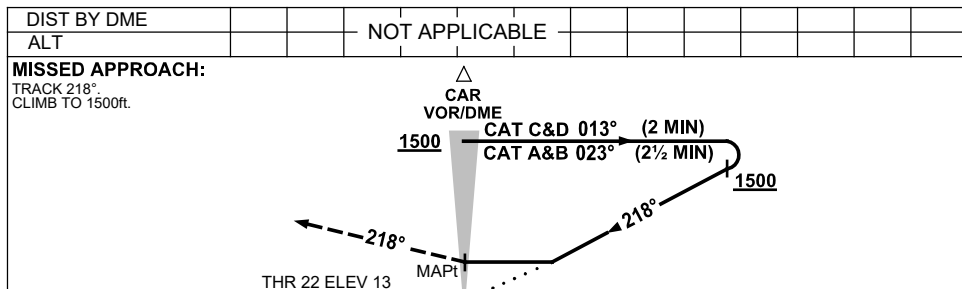
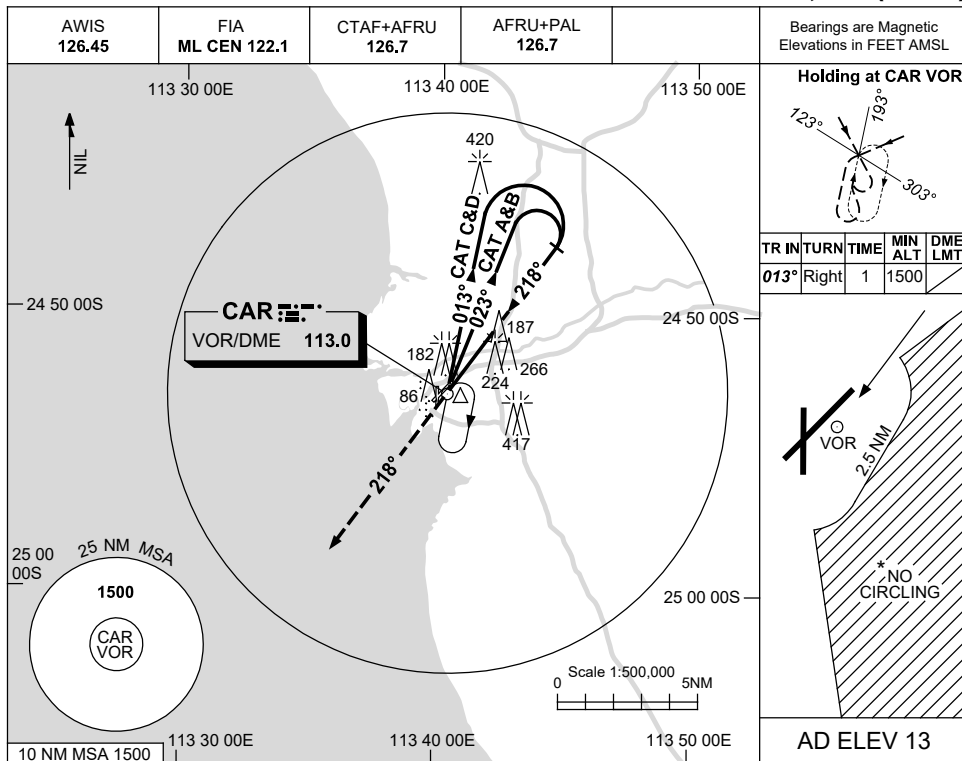


USE QNH

VOR-Y RWY 22  
**CARNARVON, WA (YCAR)**

21 MAR 2024



**NOTES**

1. MAX IAS: INITIAL : 210KT.
- \* 2. NO CIRCLING IN SECTOR EAST OF RWY 22 & RWY 36 BEYOND 2.5NM.

CATEGORY	A	B	C	D
S-I VOR	<b>630 (617-3.5)</b>			
CIRCLING*	<b>670 (657-2.4)</b>	<b>760 (747-4.0)</b>	<b>810 (797-5.0)</b>	
ALTERNATE	(1157-4.4)	(1247-6.0)	(1297-7.0)	

Changes: CIRCLING MINIMA, REVERSAL ALT, 420FT TOWER, 266FT TOWER.

CARVO02-178