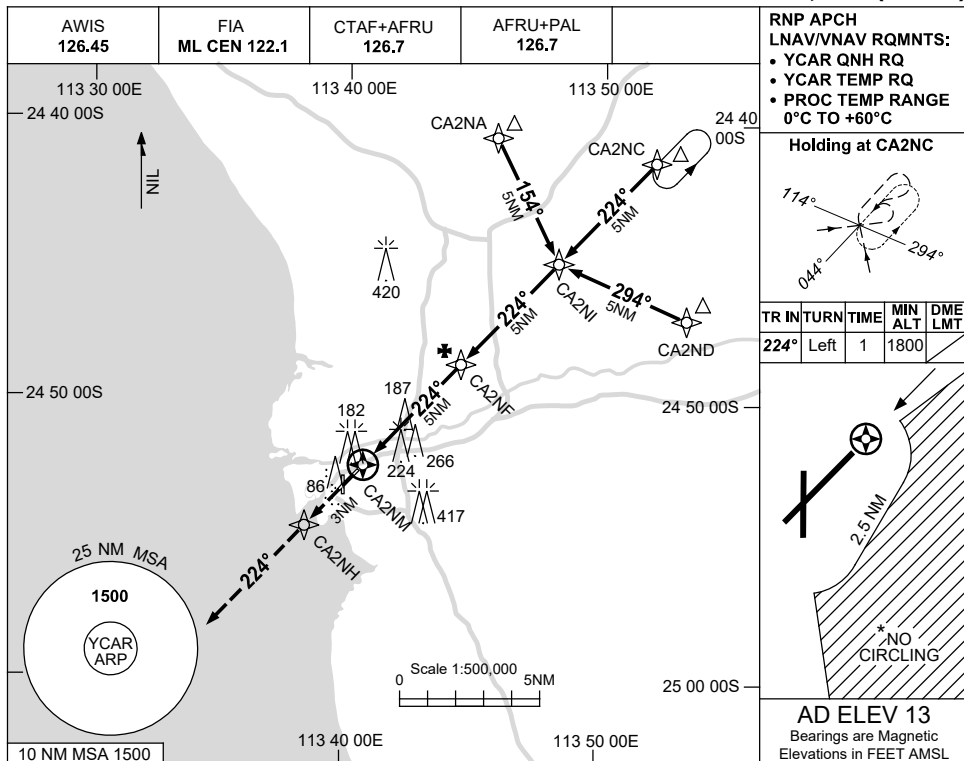


USE QNH

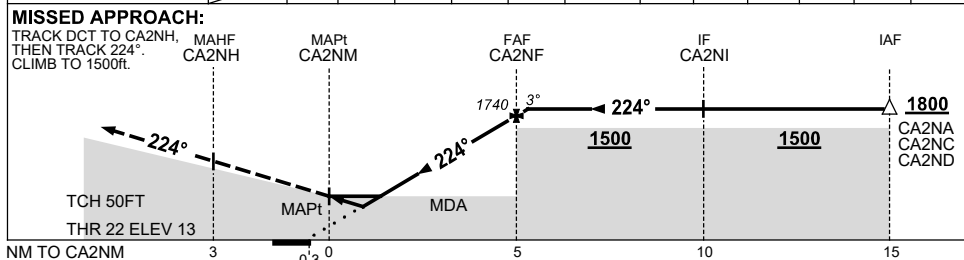
RNP RWY 22

21 MAR 2024

CARNARVON, WA (YCAR)



NM TO NEXT WPT	CA2NM	0.6	1.2	2	3	4	CA2NF	0.2		
ALT (3° APCH PATH)		350	540	790	1100	1420	1740	1800		



NOTES

CATEGORY	A	B	C	D
LNAV/VNAV	350 (337-1.9)			
LNAV	540 (527-3.0)			
CIRCLING *	670 (657-2.4)	760 (747-4.0)	810 (797-5.0)	
ALTERNATE	(1157-4.4)		(1297-7.0)	

1. MAX IAS: INITIAL : 210KT.
- * 2. NO CIRCLING IN SECTOR EAST OF RWY 22 & RWY 36 BEYOND 2.5NM.

Changes: CIRCLING MINIMA, 420FT TOWER, 266FT TOWER.

CARGN02-178