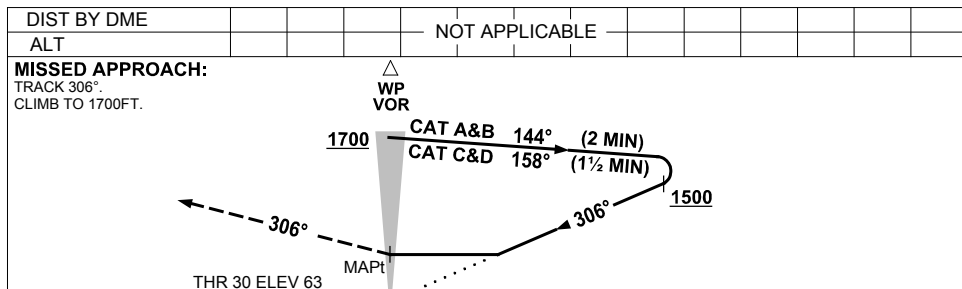
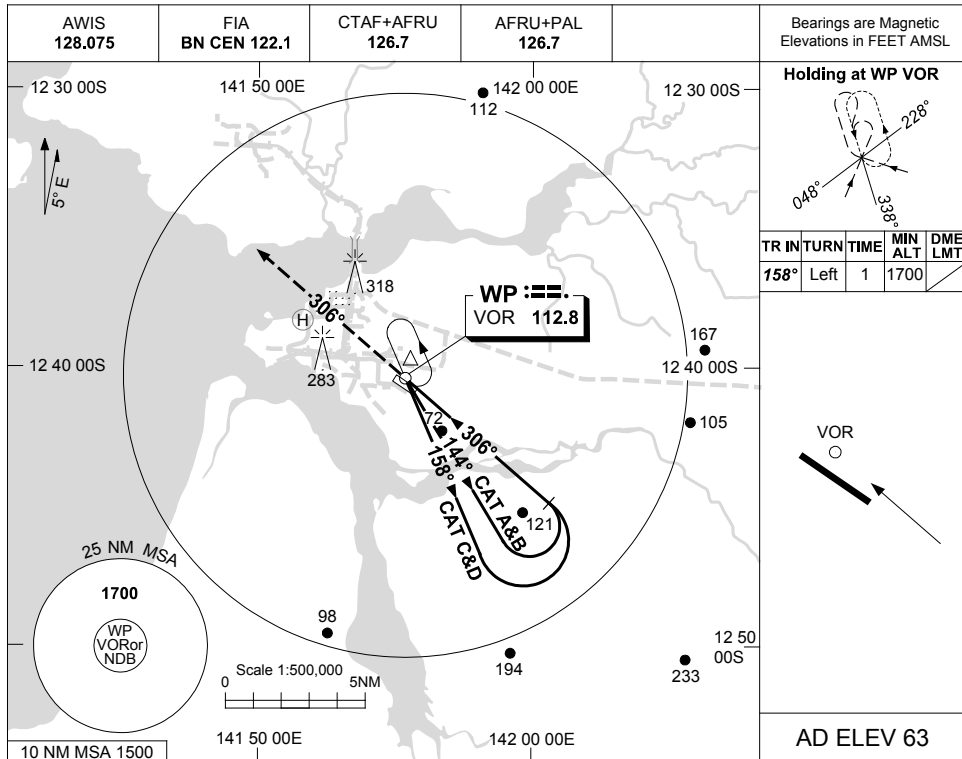


USE QNH

VOR-Y RWY 30  
WEIPA, QLD (YBWP)

25 MAR 2021



**NOTES**

CATEGORY	A	B	C	D
S-I VOR	740 (677-3.8)			
CIRCLING	740 (677-2.4)	830 (767-4.0)	860 (797-5.0)	
ALTERNATE	(1177-4.4)	(1267-6.0)	(1297-7.0)	

1. MAX IAS:  
INITIAL : 210KT.

Changes: 283FT SINGLE LIT OBST, 318FT LIT OBST.

BWPV004-166