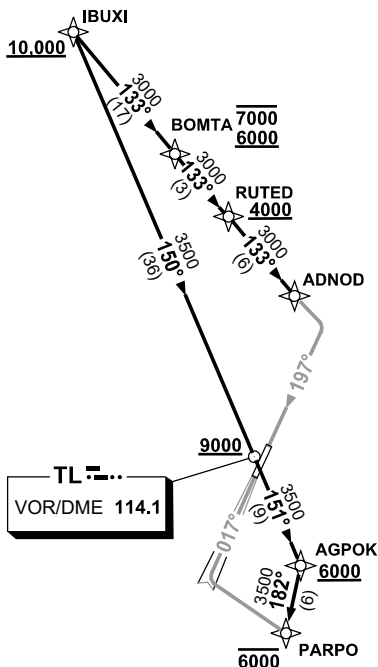


**STANDARD INSTRUMENT ARRIVAL (STAR)
IBUXI TWO ALPHA, ZULU ARRIVALS (RNAV)
TOWNSVILLE/TOWNSVILLE INTL, QLD (YBTL)**

30 NOV 2023

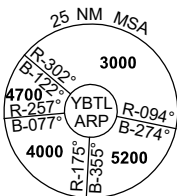
ATIS 114.1 133.5 276	ACD 128.1	SMC 121.8 264.6	TWR 118.3	APP/DEP 126.8	FIA (AH) BN CEN 120.55	CTAF+AFRU (AH) AFRU+PAL (AH) 118.3	AWIS (AH) 133.5	Bearings are Magnetic Elevations in FEET AMSL
-------------------------	--------------	--------------------	--------------	------------------	------------------------------	--	--------------------	--

NOT TO SCALE



**SPEED
MAX IAS 250KT
BELOW 10,000ft**

RNP 1



10 NM MSA 3600

IBUXI TWO ARRIVAL

RWY 01 ALPHA:

- **Cross** IBUXI AT or ABV 10,000ft
- From IBUXI track 150° to TL VOR
- **Cross** TL VOR AT or ABV 9000ft
- Track 151° to AGPOK
- **Cross** AGPOK AT or ABV 6000ft
- Turn RIGHT, track 182° to PARPO
- **Cross** PARPO AT or BLW 6000ft
- From PARPO track via RNP Z RWY 01 or ILS RWY 01

RWY 19 ZULU:

- **Cross** IBUXI AT or ABV 10,000ft
- From IBUXI track 133° to BOMTA
- **Cross** BOMTA BETWEEN 6000-7000ft
- Track 133° to RUTED
- **Cross** RUTED AT or ABV 4000ft
- Track 133° to ADNOD
- From ADNOD track via RNP Z RWY 19

**COMMUNICATIONS FAILURE: PROCEDURE IN IMC
IF ABLE CTC TL APP 07-4752-1207**

- Squawk 7600, comply with vertical navigation requirements, but not below MSA.
- Track via the latest STAR clearance to the nominated runway, then fly the most suitable approach in accordance with ERSA EMERG Section 1.5.

Changes: PARPO REPLACES KIRAN, VALIDITY NUMBER, Editorial.

BTLRS01-177