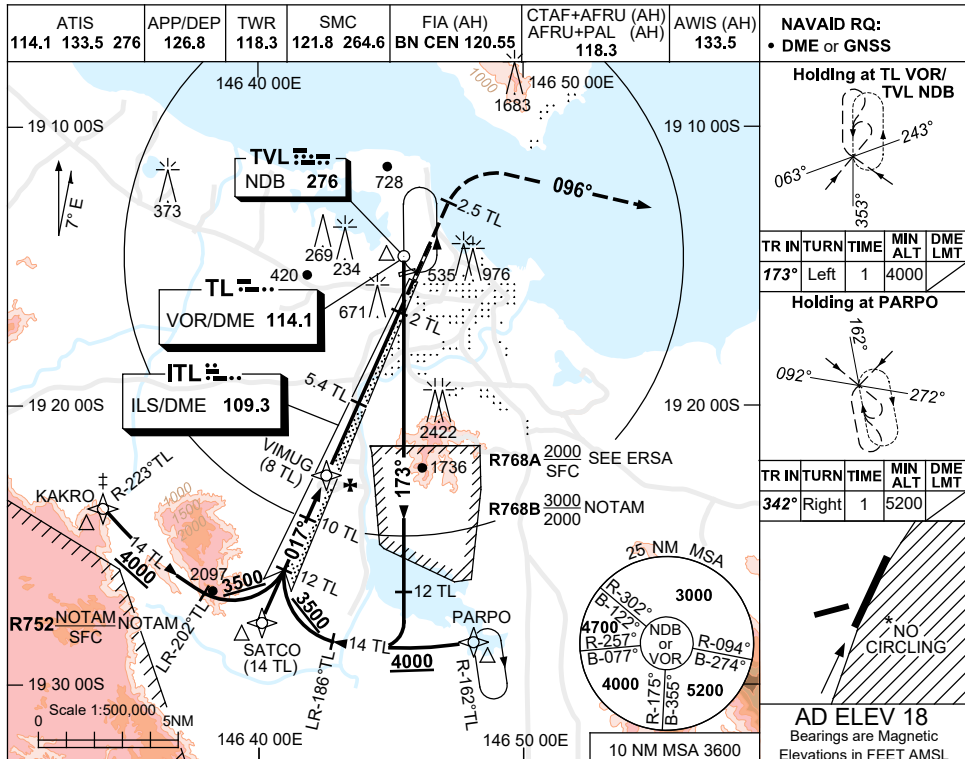


USE QNH

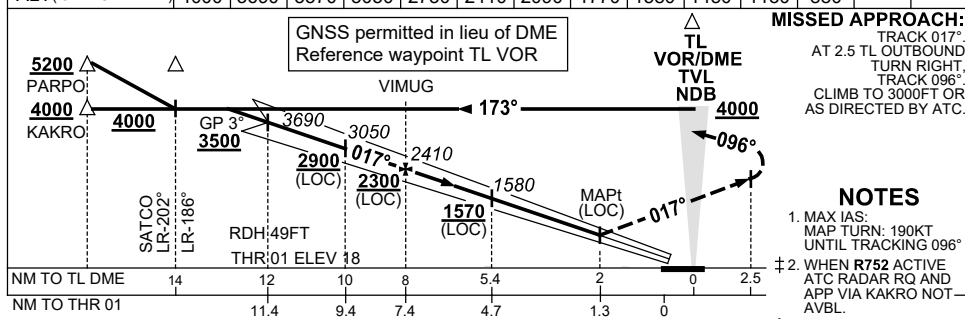
ILS-X or LOC-X RWY 01

30 NOV 2023

TOWNSVILLE/TOWNSVILLE INTL, QLD (YBTL)



NM TO TL DME	13	12	11	10	9	8	7	6	5.4	5	4	3.2		
ALT (3° APCH PATH)	4000	3690	3370	3050	2730	2410	2090	1770	1580	1450	1130	880		



MISSED APPROACH:
 TRACK 017°
 AT 2.5 TL OUTBOUND
 TURN RIGHT,
 TRACK 096°
 CLIMB TO 3000FT OR
 AS DIRECTED BY ATC.

NOTES

1. MAX IAS:
MAP TURN: 190KT
UNTIL TRACKING 096°
2. WHEN R752 ACTIVE
ATC RADAR RQ AND
APP VIA KAKRO NOT
AVBL.
3. NO CIRCLING IN
SECTOR EAST OF
RWY 01 & RWY 19.
4. ACFT MAY BE RADAR
VECTORED TO IAF.
5. SPECIAL ALTN MNM
900 /4 SKM. (NOT
(APPLICABLE TO
LOC/DME).
6. COLOUR: SEE
SPEC NOTICES.

CATEGORY	A	B	C	D
S-I ILS		370 (352)	1.6 (VIS 1.2 WITH ACTUAL QNH)	
S-I LOC		880 (862-4.6)		
CIRCLING *	1090 (1072-2.4)		1350 (1332-4.0)	1350 (1332-5.0)
ALTERNATE *	(1572-4.4)		(1832-6.0)	(1832-7.0)

Changes: KAKRO REPLACES FREDY, PARPO REPLACES KIRAN, Editorial.

BTLII01-177