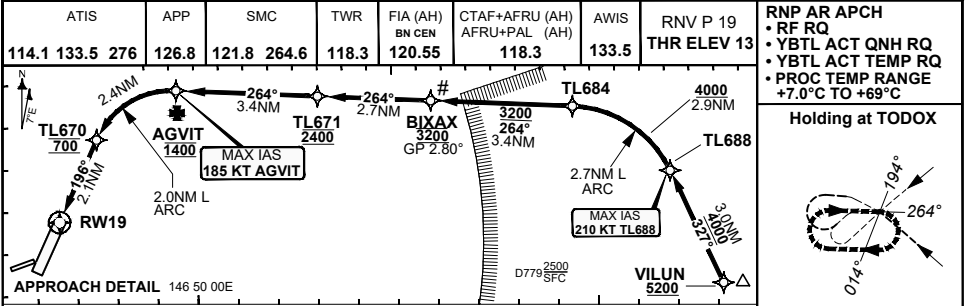


**FOR CASUALTY APPROVED
OPERATORS ONLY
USE QNH**

RNP P RWY 19 (AR)

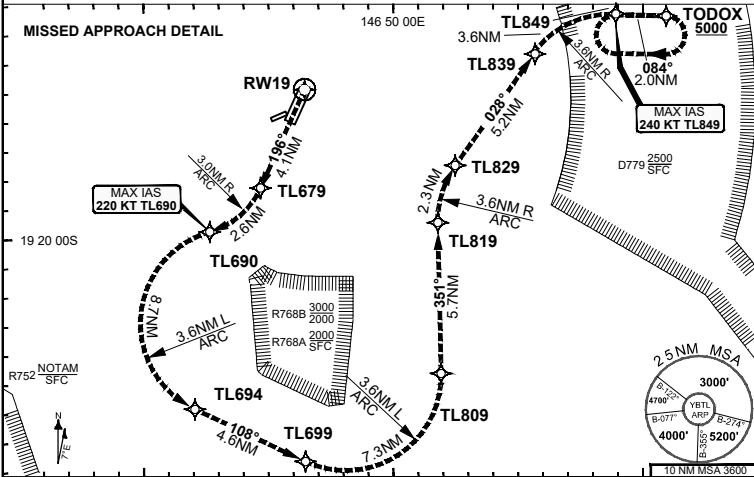
30 NOV 2023

TOWNSVILLE/TOWNSVILLE INTL, QLD (YBTL)

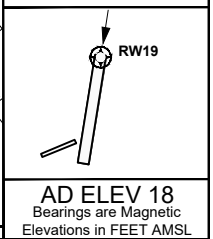


RNP AR APCH
 • RF RQ
 • YBTL ACT QNH RQ
 • YBTL ACT TEMP RQ
 • PROC TEMP RANGE
 +7.0°C TO +69°C

Holding at TODOX

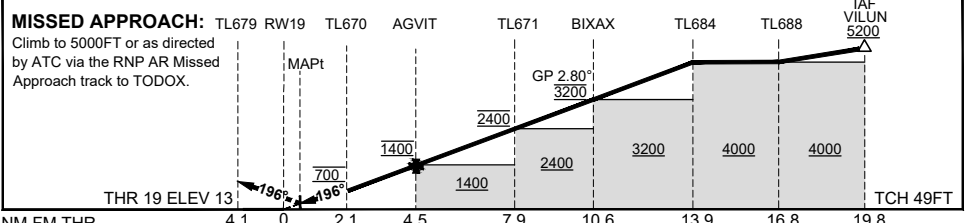


TR	INTURN	TIME	MIN ALT	DME LMT
084°	Right	1'	5000	



AD ELEV 18
 Bearings are Magnetic
 Elevations in FEET AMSL

	RW19	TL670	AGVIT	TL671	BIXAX	TL684	TL688	VILUN
ALT (2.80° APCH PATH)		435	700	1400	3200	4202	5070	5947



NM FM THR 4.1 0 2.1 4.5 7.9 10.6 13.9 16.8 19.8

NOTES

CATEGORY	A	B	C	D
RNP (0.30)* (3.75% MAP)			DA(H) 435 (422-2.5)	DA(H) 435 (422-2.5)
CIRCLING	N/A		NOT AUTHORISED	NOT AUTHORISED
ALTERNATE				

1. APCH Path does not coincide with PAPI glide path 3.3°.
 2. RNP 0.30 RQ FROM WPT VILUN TO RWY 19
 *3. Minimum MAP gradient 3.75% to 4300 FT Required for Obstacle Clearance.
 #4. Latest Intercept Point (LIP)

202308030717 COPYRIGHT 2023 © NAVERUS, INC., USA. GE PROPRIETARY INFORMATION
 Changes: EDITORIAL, WESTY TO TODOX BTLGN07-177

Prepared by GE Aviation - ICAO Doc 9905 Compliant

DO NOT USE FOR NAVIGATION

