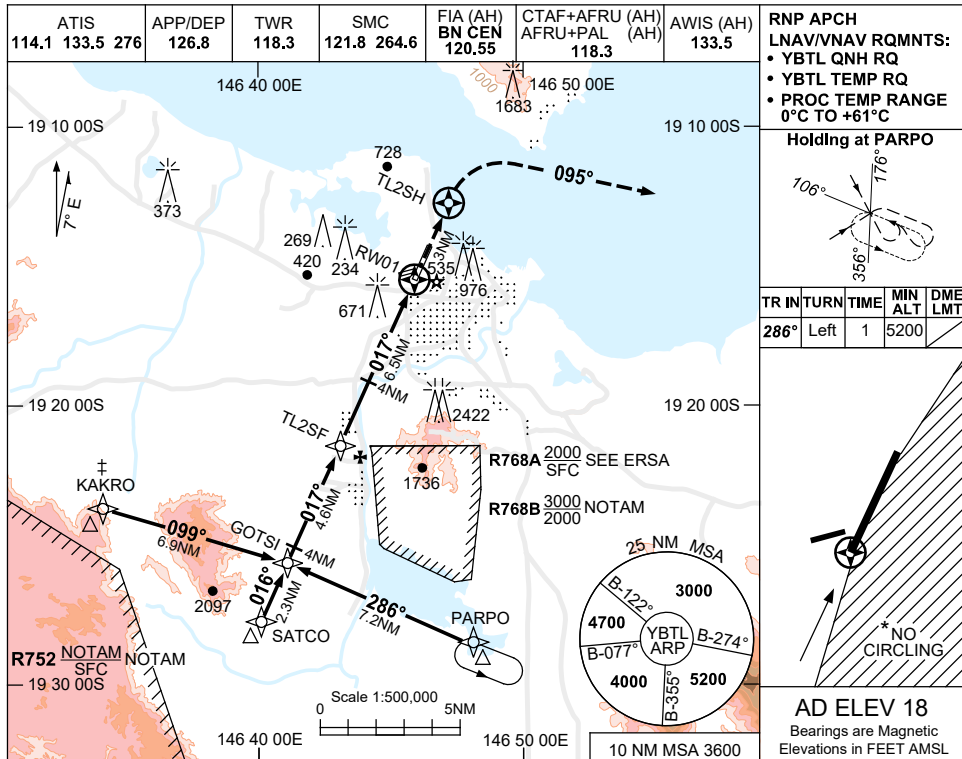


USE QNH

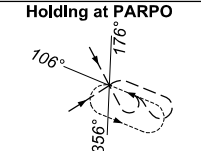
RNP Z RWY 01

30 NOV 2023

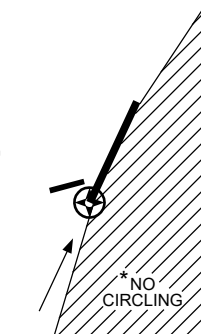
TOWNSVILLE/TOWNSVILLE INTL, QLD (YBTL)



RNP APCH  
LNAV/VNAV RQMNTS:  
• YBTL QNH RQ  
• YBTL TEMP RQ  
• PROC TEMP RANGE  
0°C TO +61°C

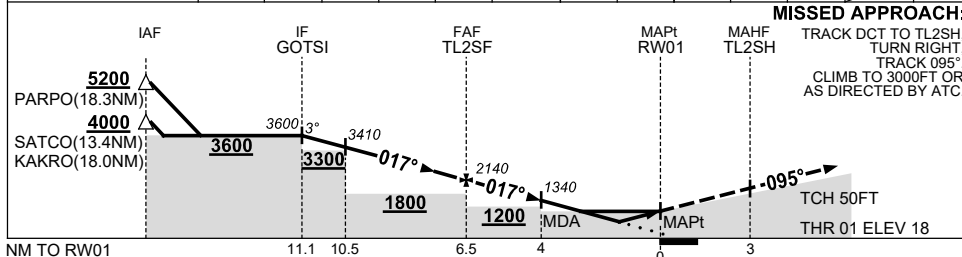


TR IN	TURN	TIME	MIN ALT	DME LMT
286°	Left	1	5200	



AD ELEV 18  
Bearings are Magnetic  
Elevations in FEET AMSL

NM TO NEXT WPT	GOTSI	4	3	2	1	TL2SF	5	4	3	2.9	2.3	RW01
ALT (3° APCH PATH)	3600	3410	3090	2770	2460	2140	1660	1340	1020	980	810	



**MISSED APPROACH:**  
TRACK DCT TO TL2SH.  
TURN RIGHT,  
TRACK 095°.  
CLIMB TO 3000FT OR  
AS DIRECTED BY ATC.

TCH 50FT  
THR 01 ELEV 18

**NOTES**  
1. MAX IAS:  
INITIAL : 200KT.  
MAP TURN: 190KT.

\*2. NO CIRCLING IN  
SECTOR EAST OF  
RWY 01 & RWY 19.

‡3. WHEN R752 ACT ATC  
RADAR RQ AND APCH  
VIA KAKRO NOT AVBL.

4. COLOUR: SEE  
SPEC NOTICES.

CATEGORY	A	B	C	D
LNAV/VNAV		810 (792-4.2)		
LNAV		980 (962-5.0)		
CIRCLING *	1090 (1072-2.4)		1350 (1332-4.0)	1350 (1332-5.0)
ALTERNATE	(1572-4.4)		(1832-6.0)	(1832-7.0)

Changes: WPT NAMING CONVENTION, KAKRO, PARPO, Editorial.

BTLGN05-177