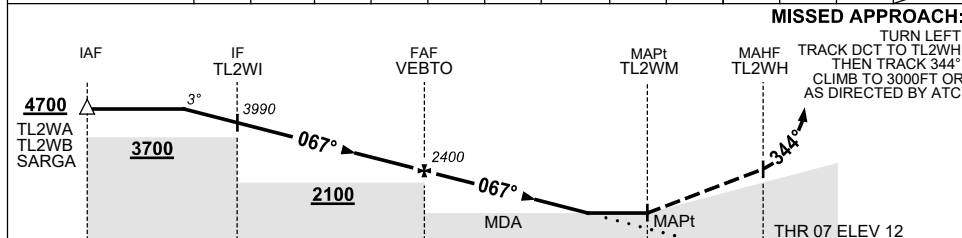
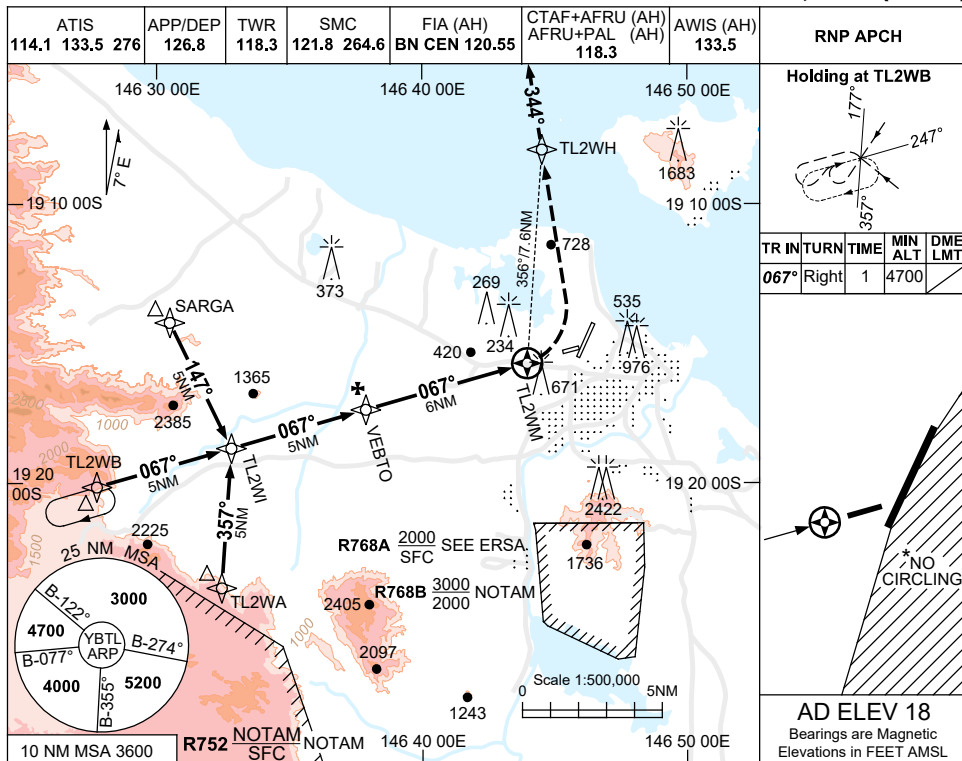


30 NOV 2023

USE QNH
TOWNSVILLE/TOWNSVILLE INTL, QLD (YBTL)

RNP RWY 07



NOTES

- MAX IAS: INITIAL : 210KT, MAP TURN: 180KT.
- NO CIRCLING IN SECTOR EAST OF RWY 01 & RWY 19.
- WHEN R752 ACTIVE HOLDING AND APCH VIA TL2WA NOT AVBL.
- COLOR: SEE SPEC NOTICES.

CATEGORY	A	B	C	D
LNAV	940 (922-5.0)			NOT APPLICABLE
CIRCLING *	1090 (1072-2.4)		1350 (1332-4.0)	
ALTERNATE	(1572-4.4)		(1832-6.0)	

Changes: WPT NAMING CONVENTION, NEW LOGO.

BTLGN01-177