

FOR CASA APPROVED OPERATORS ONLY

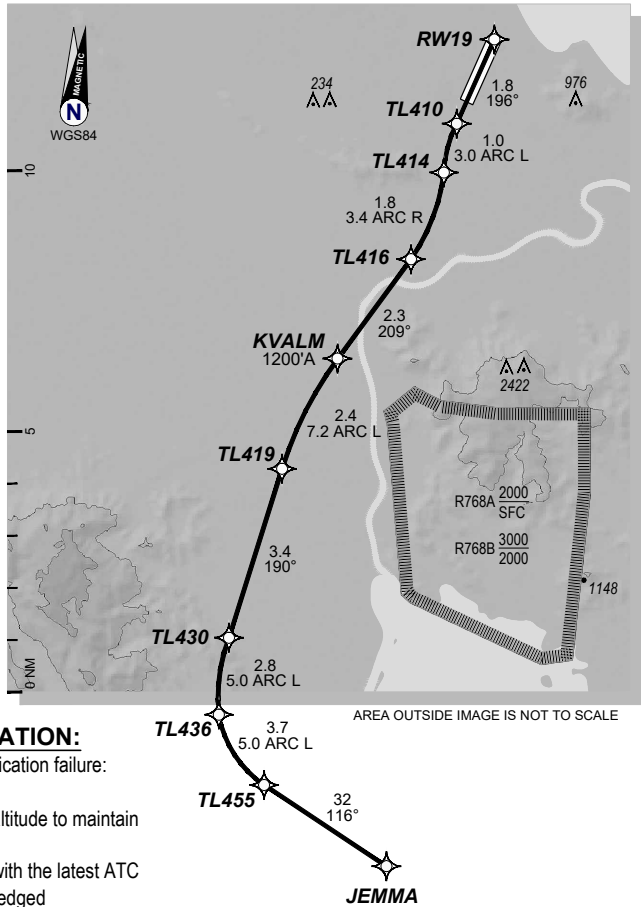
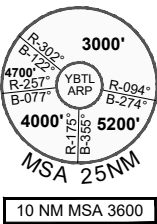
USE QNH

KVALM TWO DEPARTURE

30 NOV 2023

TOWNSVILLE/TOWNSVILLE INTL, QLD (YBTL)

Apt Elev 18'		Trans ALT 10000'							
ATIS 114.1 133.5 276			DEP 126.8	TWR 118.3	SMC 121.8 264.6	FIA (AH) BN CEN 120.55	CTAF+AFRU (AH) AFRU+PAL (AH) 118.3	AWIS (AH) 133.5	
KVALM TWO RNAV (RNP) DEPARTURE RNP 0.30 (KVALM2.JEMMA) RWY 19				Requires weather minima of 0' ceiling / 500 meters visibility.					
				TAKE-OFF: RWY 19: Fly the RNAV (RNP) track to JEMMA . Cross KVALM at or above 1200' .					



LOST COMMUNICATION:
 On recognition of communication failure:
 - Squawk 7600
 - Climb to minimum safe altitude to maintain terrain clearance
 - Proceed in accordance with the latest ATC route clearance acknowledged

202307202142 COPYRIGHT 2023 GE DIGITAL. USA, PROPRIETARY AND CONFIDENTIAL
 Changes: PROCEDURE UPNUMBERED, EDITORIAL BTLDP16-177

DO NOT USE FOR NAVIGATION

Prepared by GE Aviation

