

**STANDARD INSTRUMENT DEPARTURES (SID)  
RWY 19 IGBIK ONE (RNAV)  
TOWNSVILLE/TOWNSVILLE INTL, QLD (YBTL)**

**24 MAR 2022**

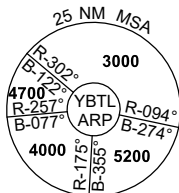
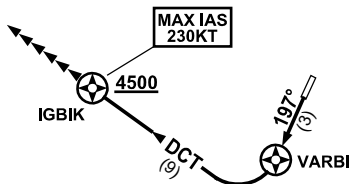
ATIS 114.1 133.5 276	ACD 128.1	SMC 121.8 264.6	TWR 118.3	APP/DEP 126.8	FIA (AH) BN CEN 120.55	CTAF+AFRU (AH) AFRU+PAL (AH) 118.3	AWIS (AH) 133.5	Bearings are Magnetic Elevations in FEET AMSL
-------------------------	--------------	--------------------	--------------	------------------	------------------------------	--	--------------------	--

NOT TO SCALE



**SPEED  
MAX IAS 250KT  
BELOW 10,000ft**

**RNP 1**



10 NM MSA 3600

**IGBIK ONE DEPARTURE**

**RWY 19**

GRAD 5.5% to 1300ft then 3.3%  
**MAX IAS 230KT UNTIL PASSING IGBIK**

- Track 197° to VARBI
- Turn RIGHT, track DCT to IGBIK
- **Cross IGBIK AT or ABV 4500ft**  
(RQ GRAD to IGBIK: 5.7%)
- Expect radar vectors to cleared route

**COMMUNICATIONS FAILURE PROCEDURE**

On recognition of communication failure

- Squawk 7600
- Maintain last assigned vector for two minutes, and
- CLIMB IF NECESSARY TO MINIMUM SAFE ALTITUDE, to maintain terrain clearance, then
- Proceed in accordance with the latest ATC route clearance acknowledged.

Changes: Editorial.

BTLDP08-170