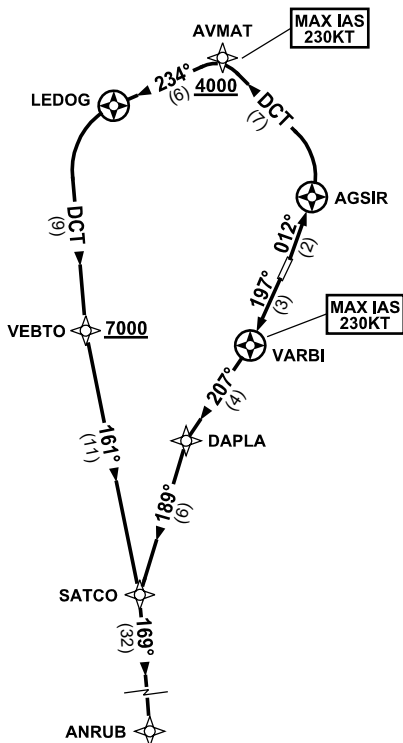


**STANDARD INSTRUMENT DEPARTURES (SID)
RWY 01/19 ANRUB ONE (RNAV)
TOWNSVILLE/TOWNSVILLE INTL, QLD (YBTL)**

24 MAR 2022

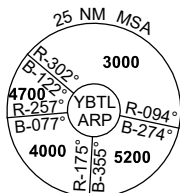
ATIS 114.1 133.5 276	ACD 128.1	SMC 121.8 264.6	TWR 118.3	APP/DEP 126.8	FIA (AH) BN CEN 120.55	CTAF+AFRU (AH) AFRU+PAL (AH) 118.3	AWIS (AH) 133.5	Bearings are Magnetic Elevations in FEET AMSL
-------------------------	--------------	--------------------	--------------	------------------	------------------------------	--	--------------------	--

NOT TO SCALE



**SPEED
MAX IAS 250KT
BELOW 10,000ft**

RNP 1



10 NM MSA 3600

ANRUB ONE DEPARTURE

RWY 01

- GRAD 5.4% to 1000ft then 3.3%
- MAX IAS 230KT UNTIL PASSING AVMAT**
- Track 012° to AGSIR
- Turn LEFT, track DCT to AVMAT
- Cross AVMAT AT or ABV 4000ft**
(RQ GRAD to AVMAT: 7.0%)
- Turn LEFT, track 234° to LEDOG
- Turn LEFT, track DCT to VEBTO
- Cross VEBTO AT or ABV 7000ft**
- Track 161° to SATCO
- Turn RIGHT, track 169° to ANRUB

RWY 19

- GRAD 5.5% to 1200ft then 3.3%
- MAX IAS 230KT UNTIL PASSING VARBI**
- Track 197° to VARBI
- Turn RIGHT, track 207° to DAPLA
- Turn LEFT, track 189° to SATCO
- Turn LEFT, track 169° to ANRUB