

STANDARD INSTRUMENT ARRIVAL (STAR)  
 SEBVA ONE X-RAY ARRIVAL (RNAV)  
 SUNSHINE COAST, QLD (YBSU)

8 SEP 2022

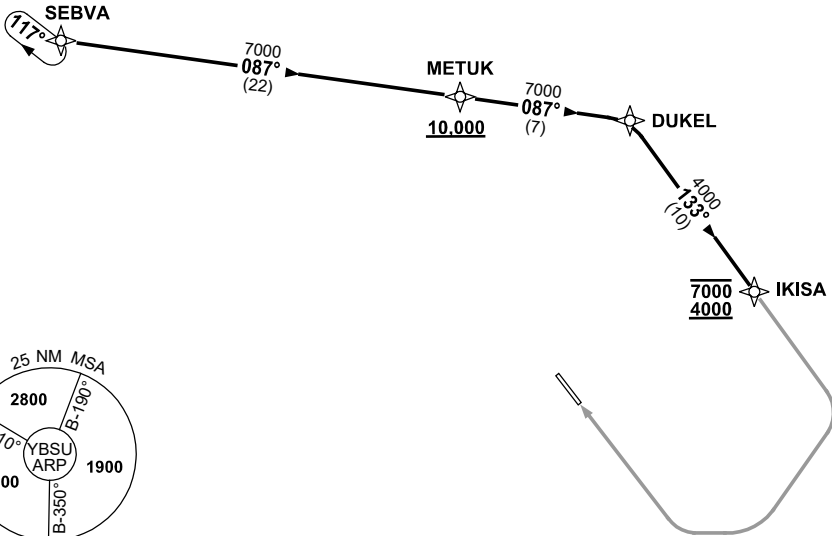
ATIS/AWIS (AH) 114.2/119.8	SMC 121.1	TWR 124.4	FIA BN CEN 129.0 (CCT AREA) BN CEN 135.2 (ON GROUND AH)	CTAF+AFRU (AH) 124.4	AFRU+PAL 124.4	Bearings are Magnetic Elevations in FEET AMSL
-------------------------------	--------------	--------------	---	-------------------------	-------------------	--

NOT TO SCALE



**CLASS D SPEED  
LIMITS APPLY**

**RNP 1**



10 NM MSA 2700

**ARRIVAL: SEBVA ONE X-RAY**

**RWY 31:**

- From SEBVA track 087° to METUK  
**Cross** METUK AT or ABV 10,000FT
- Track 087° to DUKEL
- Turn RIGHT, track 133° to IKISA  
**Cross** IKISA BTN 4000FT and 7000FT
- Track via RNP X RWY 31 (AR)

**COMMUNICATIONS FAILURE: PROCEDURE IN IMC**

- Squawk 7600, comply with vertical navigation requirements, but not below MSA.
- Track via the latest STAR clearance to the nominated runway, then fly the most suitable approach in accordance with ERS A EMERG Section 1.5.

Changes: HOLDING.

BSUSR06-172