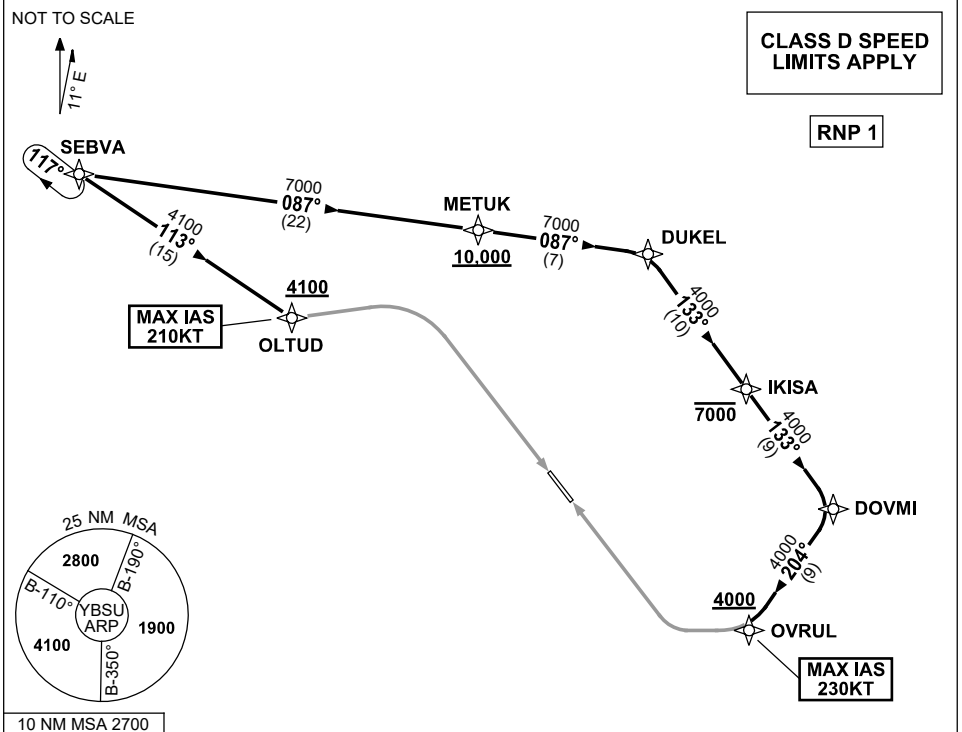


**STANDARD INSTRUMENT ARRIVAL (STAR)  
SEBVA ONE ZULU ARRIVAL (RNAV)  
SUNSHINE COAST, QLD (YBSU)**

8 SEP 2022

|                               |              |              |   |                         |                   |  |
|-------------------------------|--------------|--------------|---|-------------------------|-------------------|--|
| ATIS/AWIS (AH)<br>114.2/119.8 | SMC<br>121.1 | TWR<br>124.4 | FIA<br>BN CEN 129.0 (CCT AREA)<br>BN CEN 135.2 (ON GROUND AH) | CTAF+AFRU (AH)<br>124.4 | AFRU+PAL<br>124.4 | Bearings are Magnetic<br>Elevations in FEET AMSL |
|-------------------------------|--------------|--------------|---|-------------------------|-------------------|--|



**ARRIVAL: SEBVA ONE ZULU**

**RWY 13:**

- From SEBVA track 113° to OLTUD  
Cross OLTUD AT or ABV 4100ft  
MAX IAS 210KT AT OLTUD
- Track via RNP Z RWY 13

**RWY 31:**

- From SEBVA, track 087° to METUK  
Cross METUK AT or ABV 10,000ft
- Track 087° to DUKEL
- Turn RIGHT, track 133° to IKISA  
Cross IKISA AT or BLW 7000ft
- Track 133° to DOVMI
- Turn RIGHT, track 204° to OVRUL  
Cross OVRUL AT or ABV 4000ft  
MAX IAS 230KT AT OVRUL
- Track via RNP Z RWY 31 or RNP Y RWY 31

**COMMUNICATIONS FAILURE: PROCEDURE IN IMC**

- Squawk 7600, comply with vertical navigation requirements, but not below MSA.
- Track via the latest STAR clearance to the nominated runway, then fly the most suitable approach in accordance with ERS A EMERG Section 1.5.

Changes: HOLDING.

BSUSR05-172