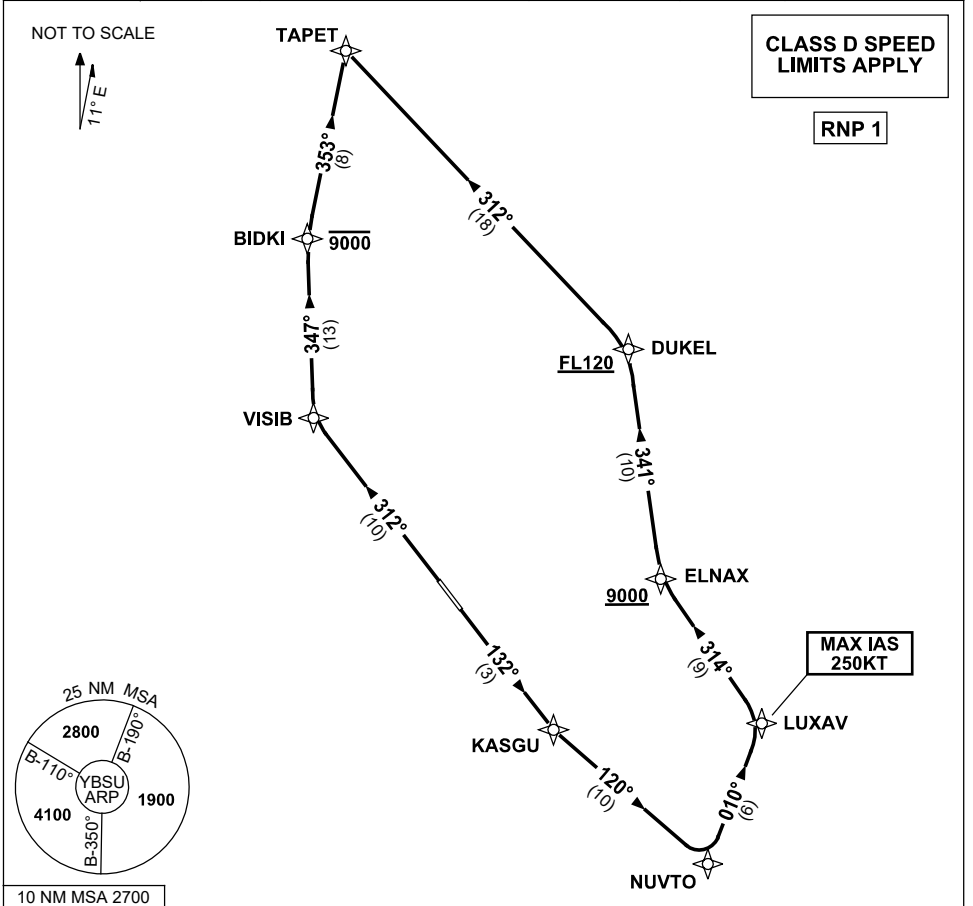


**STANDARD INSTRUMENT DEPARTURES (SID)  
TAPET ONE DEPARTURE (RNAV)  
SUNSHINE COAST, QLD (YBSU)**

**24 MAR 2022**

ATIS/AWIS (AH) 114.2/119.8	SMC 121.1	TWR 124.4	FIA BN CEN 129.0 (CCT AREA) BN CEN 135.2 (ON GROUND AH)	CTAF+AFRU (AH) 124.4	AFRU+PAL 124.4	Bearings are Magnetic Elevations in FEET AMSL
-------------------------------	--------------	--------------	---	-------------------------	-------------------	--



**TAPET ONE DEPARTURE**

**RWY 13**

- GRAD 3.3% (4.7% TO 2500ft)
- Track 132° to KASGU
- Turn LEFT, track 120° to NUVTO
- Turn LEFT, track 010° to LUXAV  
**MAX IAS 250KT to LUXAV**
- Turn LEFT, track 314° to ELNAX  
**Cross ELNAX AT or ABV 9000ft**  
(RQ GRAD TO ELNAX: 5.9%)
- Turn RIGHT, track 341° to DUKEL  
**Cross DUKEL AT or ABV FL120**
- Turn LEFT, track 312° to TAPET

**RWY 31**

- GRAD 5% TO 300ft, thence 3.3% (5% TO 7000ft)
- Track 312° to VISIB
- Turn RIGHT, track 347° to BIDKI  
**Cross BIDKI AT or BLW 9000ft**
- Turn RIGHT, track 353° to TAPET

Changes: Editorial.

BSUDP02-170