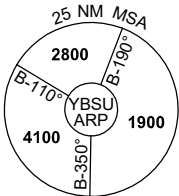
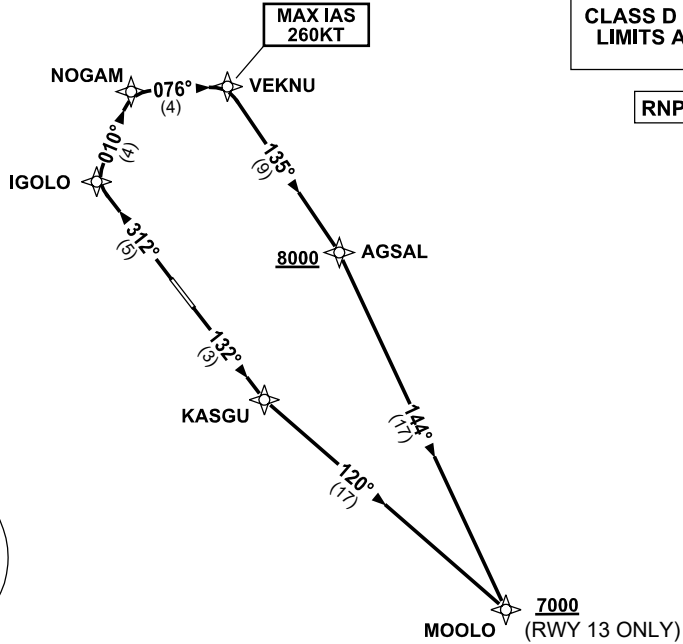


**STANDARD INSTRUMENT DEPARTURES (SID)  
MOOLO TWO DEPARTURE (RNAV)  
SUNSHINE COAST, QLD (YBSU)**

**28 NOV 2024**

ATIS/AWIS (AH) <b>114.2/119.8</b>	SMC <b>121.1</b>	TWR <b>124.4</b>	FIA <b>BN CEN 129.0 (CCT AREA) BN CEN 135.2 (ON GROUND AH)</b>	CTAF+AFRU (AH) <b>124.4</b>	AFRU+PAL <b>124.4</b>	Bearings are Magnetic Elevations in FEET AMSL
--------------------------------------	---------------------	---------------------	---	--------------------------------	--------------------------	--

NOT TO SCALE



10 NM MSA 2700

**MOOLO TWO DEPARTURE**

**RWY 13**

- GRAD 3.3% (4.7% TO 2500ft)
- Track 132° to KASGU
- Turn LEFT, track 120° to MOOLO  
**Cross MOOLO AT or ABV 7000ft**  
(RQ GRAD TO MOOLO: 5.8%)

**RWY 31**

- GRAD 5% to 300ft, then 3.3%
- Track 312° to IGLOLO
- Turn RIGHT, track 010° to NOGAM
- Turn RIGHT, track 076° to VEKNU  
**MAX IAS 260KT to VEKNU**
- Turn RIGHT, track 135° to AGSAL  
**Cross AGSAL AT or ABV 8000ft**  
(RQ GRAD TO AGSAL: 6%)
- Turn RIGHT, track 144° to MOOLO