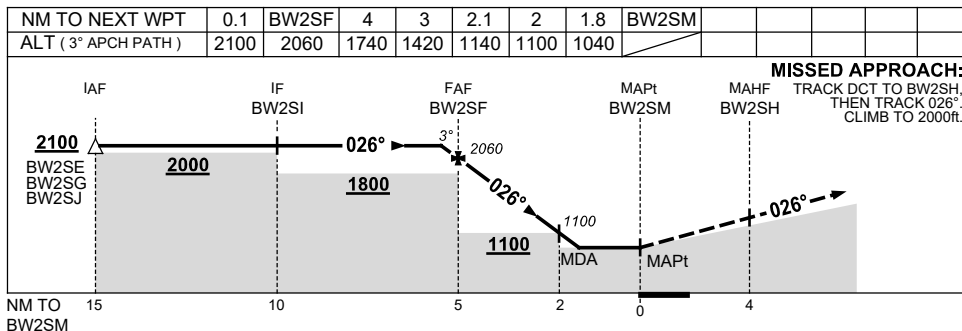
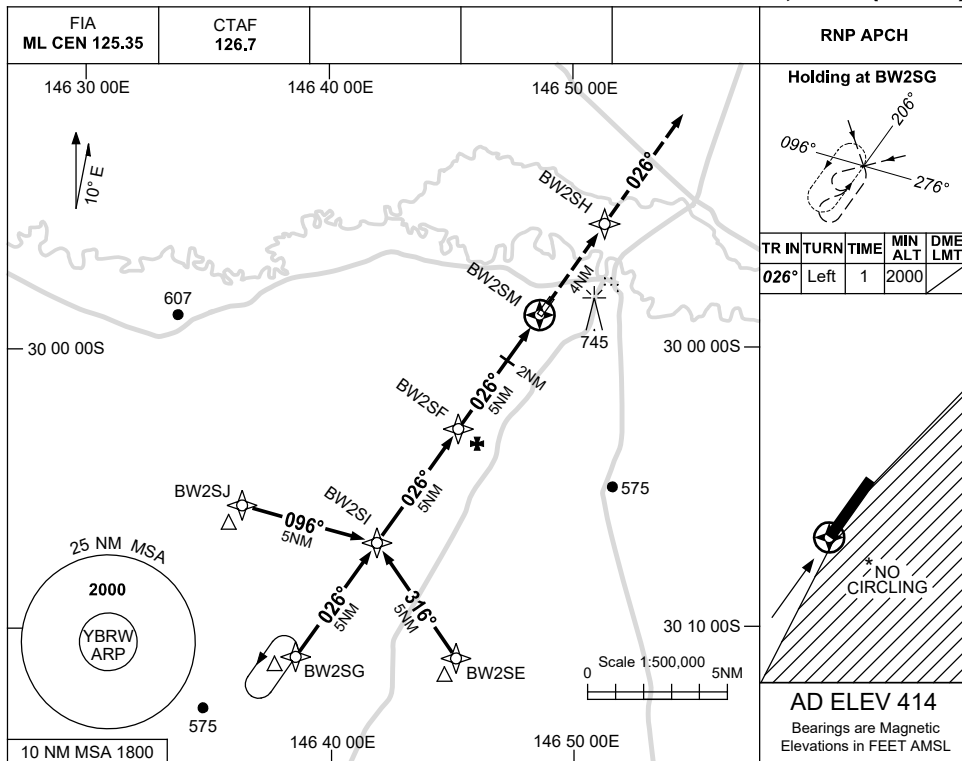


USE QNH

RNP S

28 NOV 2024

BREWARRINA, NSW (YBRW)



NOTES

CATEGORY	A	B	C	D
				NOT APPLICABLE
CIRCLING *	1040 (626-2.4)		1140 (726-4.0)	
ALTERNATE	(1126-4.4)		(1226-6.0)	

1. MAX IAS:
INITIAL : 210KT.
- * 2. NO CIRCLING EAST
OF RWY 03 / 21.

Changes: WPT NAMING CONVENTION, SEGMENT MINIMA.

BRWGN02-181