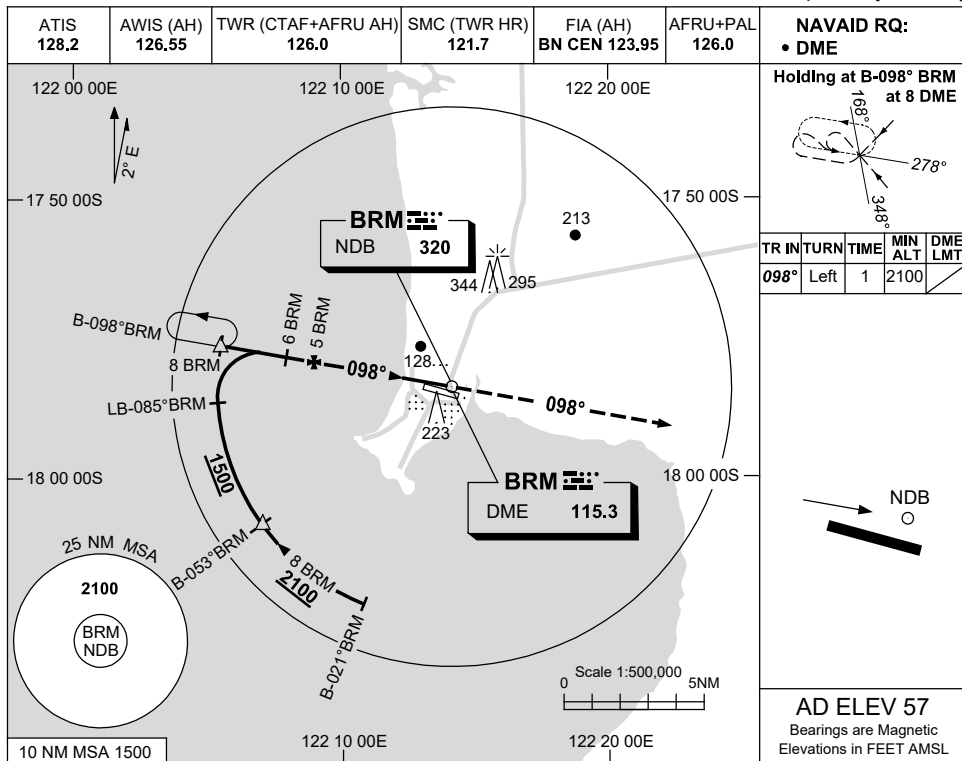


USE QNH

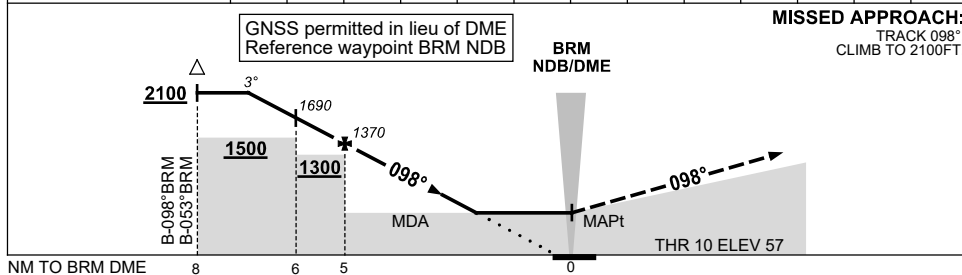
NDB-Z RWY 10

BROOME/INTL, WA (YBRM)

16 JUN 2022



DIST TO BRM DME	7	6	5	4	3	2.6							
ALT (3° APCH PATH)	2000	1690	1370	1050	730	600							



NOTES

CATEGORY	A	B	C	D
S-I NDB/DME	600 (543-3.1)			
CIRCLING	650 (593-2.4)	840 (783-4.0)	850 (793-5.0)	
ALTERNATE	(1093-4.4)	(1283-6.0)	(1293-7.0)	

1. HOLDING NOT CONTAINED IN CTA.

Changes: MAGNETIC TRACKS.

BRMNB01-171