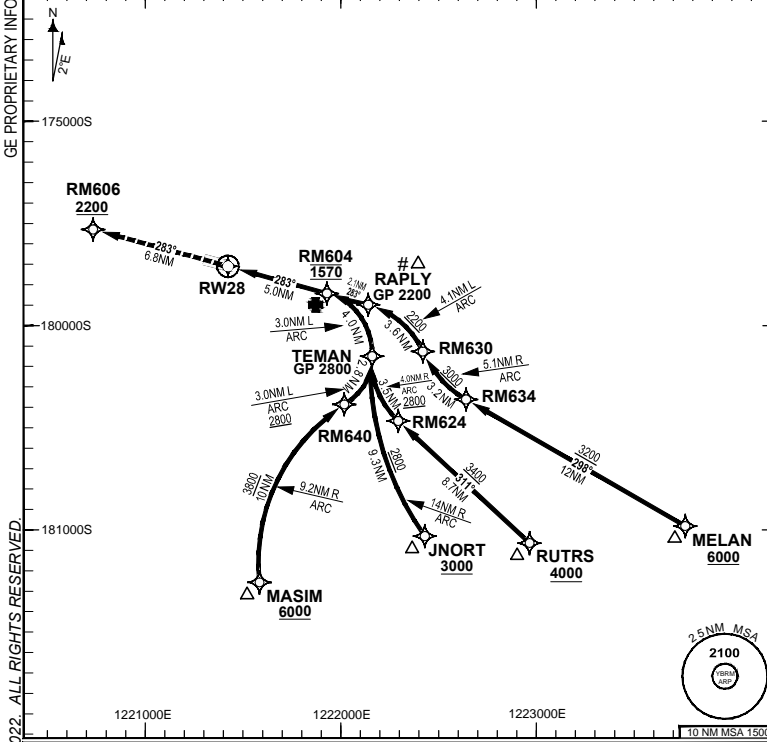


**FOR CASA APPROVED  
OPERATORS ONLY**

**8 SEP 2022**

**USE QNH**

|       |           |                    |              |               |            |                         |   |
|-------|-----------|--------------------|--------------|---------------|------------|-------------------------|---|
| ATIS  | AWIS (AH) | TWR (CTAF+AFRU AH) | SMC (TWR HR) | FIA (AH)      | AFRU + PAL | RNV U 28<br>THR ELEV 23 | RNP AR APCH<br>- RF RQ<br>- YBRM ACT QNH RQ<br>- YBRM ACT TEMP RQ<br>- PROC TEMP RANGE<br>+8°C TO +42°C |
| 128.2 | 126.55    | 126.0              | 121.7        | BN CEN 123.95 | 126.0      |                         |   |



**Holding as directed  
by ATC**

| TR | INTURN | TIME | MIN<br>ALT | DME<br>LMT |
|----|--------|------|------------|------------|
|    |        |      |            |            |

**AD ELEV 57**  
Bearings are Magnetic  
Elevations in FEET AMSL

|                              |       |       |       |  |  |  |  |
|------------------------------|-------|-------|-------|--|--|--|--|
| <b>DISTANCE FM THR</b>       | RM604 | RAPLY | TEMAN |  |  |  |  |
| <b>ALT (2.80° APCH PATH)</b> | 1570  | 2200  | 2800  |  |  |  |  |

**MISSED APPROACH:**  
Climb to 2200FT or as directed by ATC via the RNP AR Missed Approach track to RM606. Acceleration altitude 1100FT QNH.

**ENGINE OUT MISSED APPROACH:**  
SEE PAGE 2

THR 28 ELEV 23

THR 6.8      0      5.0      TCH 50FT

NM FM      6.8      0      5.0

THR

**NOTES**

- Lateral transition to Missed Approach must not be initiated prior to DA/H PSN.
- APCH Path does not coincide with VGSI on glide slope indication.
- Latest point where the ACFT can join the PROC.
- Minimum MAP gradient (All Engines) for RNP 0.10 and RNP 0.30 is 4.4% to 2200FT.

| CATEGORY  | A   | B | C                          |
|-----------|-----|---|----------------------------|
| RNP (0.3) | N/A |   | DA(H) <b>331</b> (308-1.7) |
| RNP (0.1) |     |   | DA(H) <b>313</b> (290-1.5) |
| CIRCLING  |     |   | NOT AUTHORISED             |
| ALTERNATE |     |   |                            |

Changes: TITLE, RNP AR NOTES, RNAV (RNP) to RNP AR BRMGN06-172

**DO NOT USE FOR NAVIGATION**

Prepared by GE Aviation

