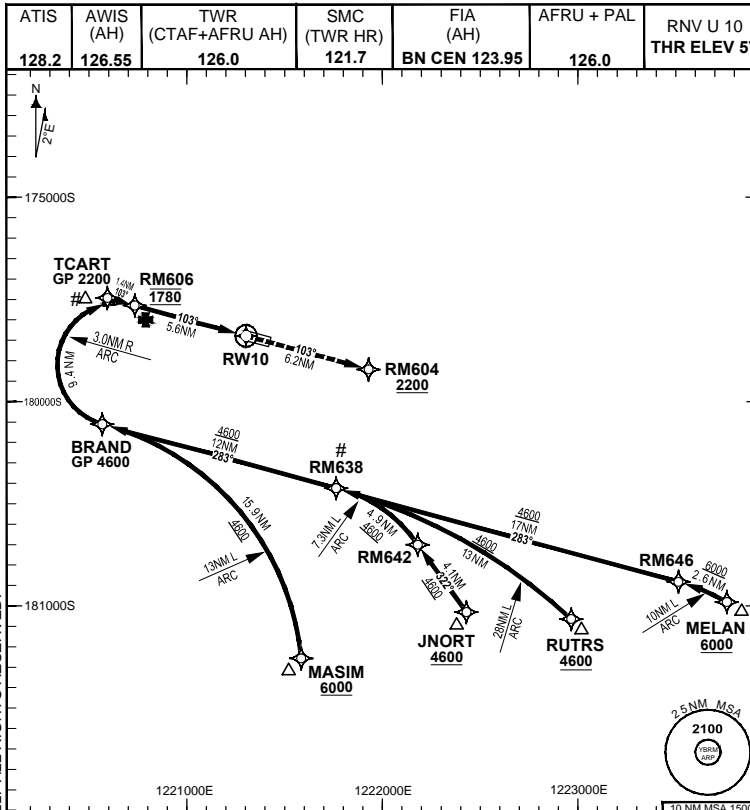


**FOR CASA APPROVED  
OPERATORS ONLY  
USE QNH**

**8 SEP 2022**

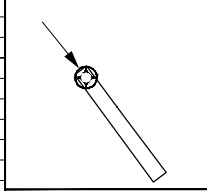
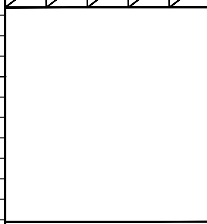
GE PROPRIETARY INFORMATION



**RNP AR APCH**  
- RF RQ  
- YBRM ACT QNH RQ  
- YBRM ACT TEMP RQ  
- PROC TEMP RANGE  
+8°C TO +42°C

**Holding as directed  
by ATC**

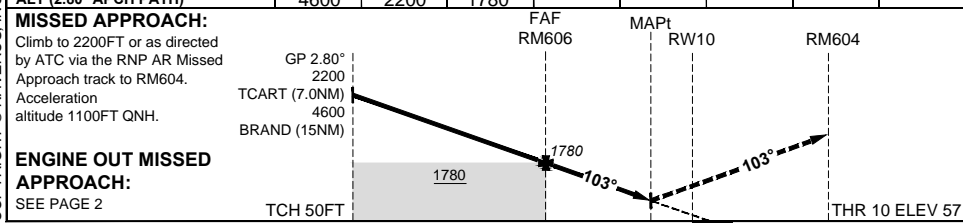
TR	INTURN	TIME	MIN ALT	DME LMT



**AD ELEV 57**  
Bearings are Magnetic  
Elevations in FEET AMSL

COPYRIGHT © NAVERUS, INC., 2022. ALL RIGHTS RESERVED.

DISTANCE FM THR	BRAND	TCART	RM606					
ALT (2.80° APCH PATH)	4600	2200	1780					



NM FM THR 5.6 0 6.2

CATEGORY	A	B	C
RNP (0.3)			DA(H) <b>346</b> (289-1.5)
CIRCLING			NOT AUTHORISED
ALTERNATE			

**NOTES**

- Lateral transition to Missed Approach must not be initiated prior to DA/H PSN.
- APCH Path does not coincide with VGSI on glide slope indication.
- Latest point where the ACFT can join the PROC.
- Minimum MAP gradient (All Engines) 4.8% to 2200FT.

Changes: TITLE, RNP AR NOTES, RNAV (RNP) to RNP AR BRMGN04-172

**DO NOT USE FOR NAVIGATION**

Prepared by GE Aviation

