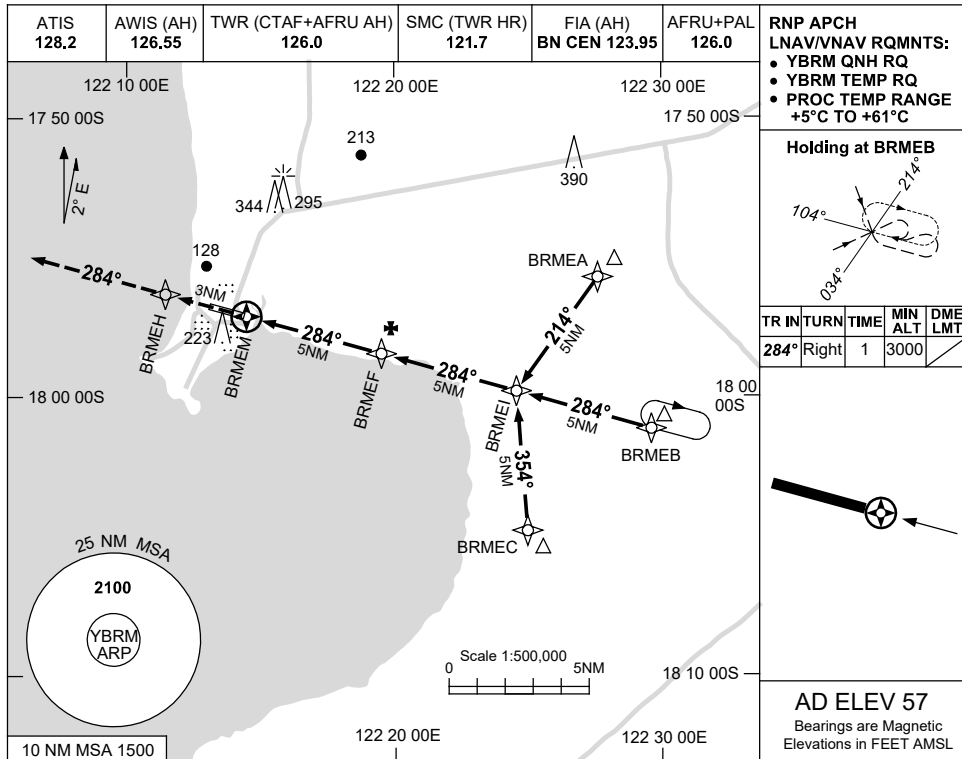


USE QNH

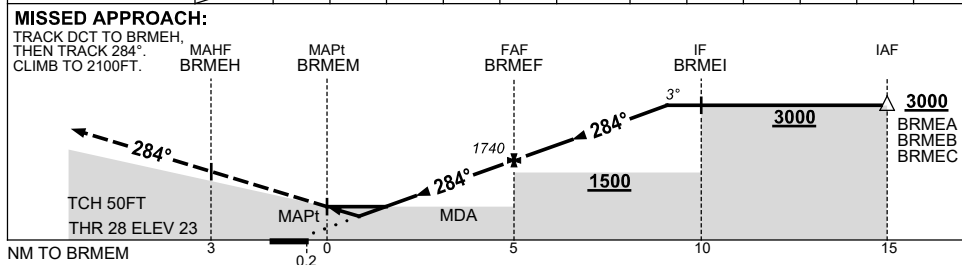
RNP Z RWY 28

**BROOME/INTL, WA (YBRM)**

8 SEP 2022



NM TO NEXT WPT	BRMEM	0.8	1.4	2	3	4	BRMEF	1	2	3	4		
ALT (3° APCH PATH)		410	600	780	1100	1420	1740	2060	2370	2690	3000		



**NOTES**

CATEGORY	A	B	C	D
LNAV/VNAV	<b>410 (387-2.2)</b>			
LNAV	<b>600 (577-3.3)</b>			
CIRCLING	<b>650 (593-2.4)</b>	<b>840 (783-4.0)</b>	<b>850 (793-5.0)</b>	
ALTERNATE	<b>(1093-4.4)</b>	<b>(1283-6.0)</b>	<b>(1293-7.0)</b>	

1. MAX IAS: INITIAL : 210KT.
2. HOLDING NOT CONTAINED IN CTA.

Changes: CHART TITLE, PBN SPECIFICATION BOX.

BRMGN02-172