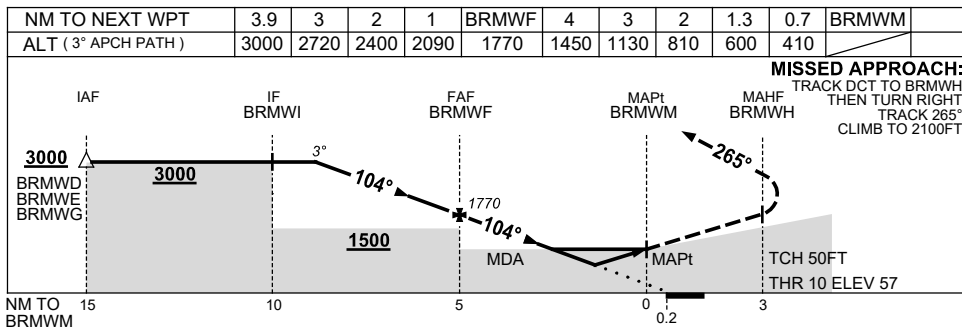
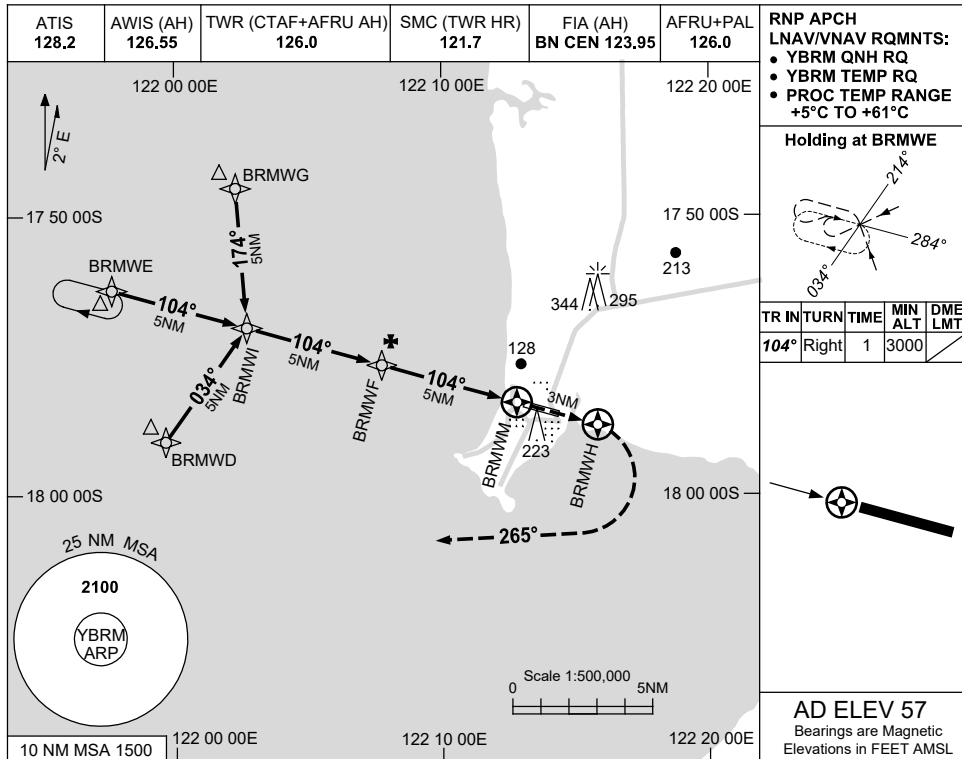


USE QNH

RNP Z RWY 10

8 SEP 2022

**BROOME/INTL, WA (YBRM)**



**MISSED APPROACH:**  
TRACK DCT TO BRMWH,  
THEN TURN RIGHT,  
TRACK 265°,  
CLIMB TO 2100FT.

**NOTES**

CATEGORY	A	B	C	D
LNAV/VNAV	410 (353-2.0)			
LNAV	600 (543-3.1)			
CIRCLING	650 (593-2.4)	840 (783-4.0)	850 (793-5.0)	
ALTERNATE	(1093-4.4)		(1283-6.0) (1293-7.0)	

1. MAX IAS:  
INITIAL : 210KT.
2. HOLDING NOT  
CONTAINED IN  
CTA.

Changes: CHART TITLE, PBN SPECIFICATION BOX.

BRMGN01-172