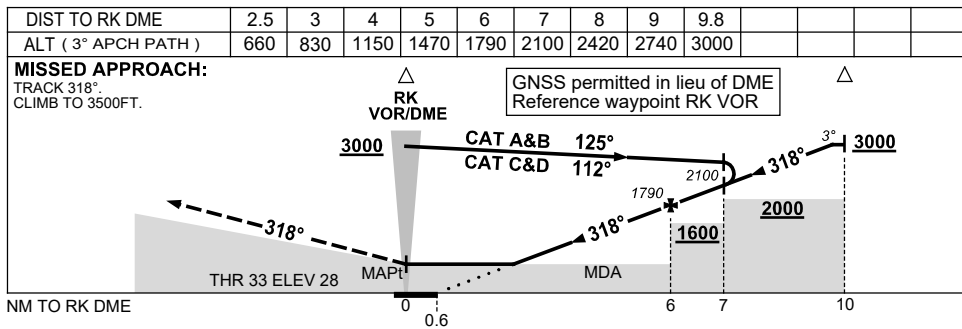
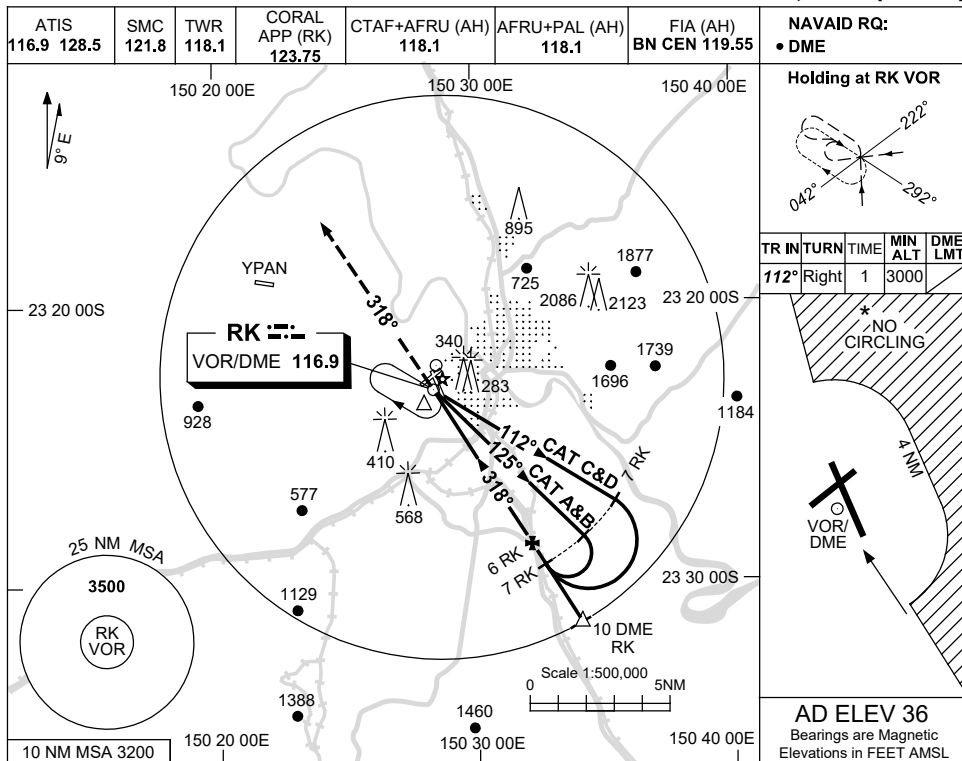


USE QNH

VOR RWY 33

1 DEC 2022

ROCKHAMPTON, QLD (YBRK)



CATEGORY	A	B	C	D
S-I VOR/DME	660 (632-3.6)			
CIRCLING *	840 (804-2.4)	1080 (1044-4.0)	1080 (1044-5.0)	
ALTERNATE	(1304-4.4)	(1544-6.0)	(1544-7.0)	

- NOTES**
1. MAX IAS:
INITIAL : 210KT.
HOLDING: 210KT.
 - * 2. NO CIRCLING
BEYOND 4 NM
EAST OF RWY 15/33.

Changes: YPAN, CO-ORD FORMAT, Editorial.

BRKVO02-173