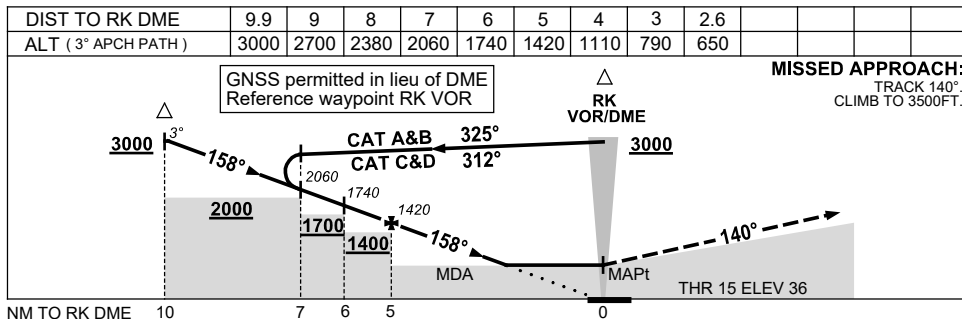
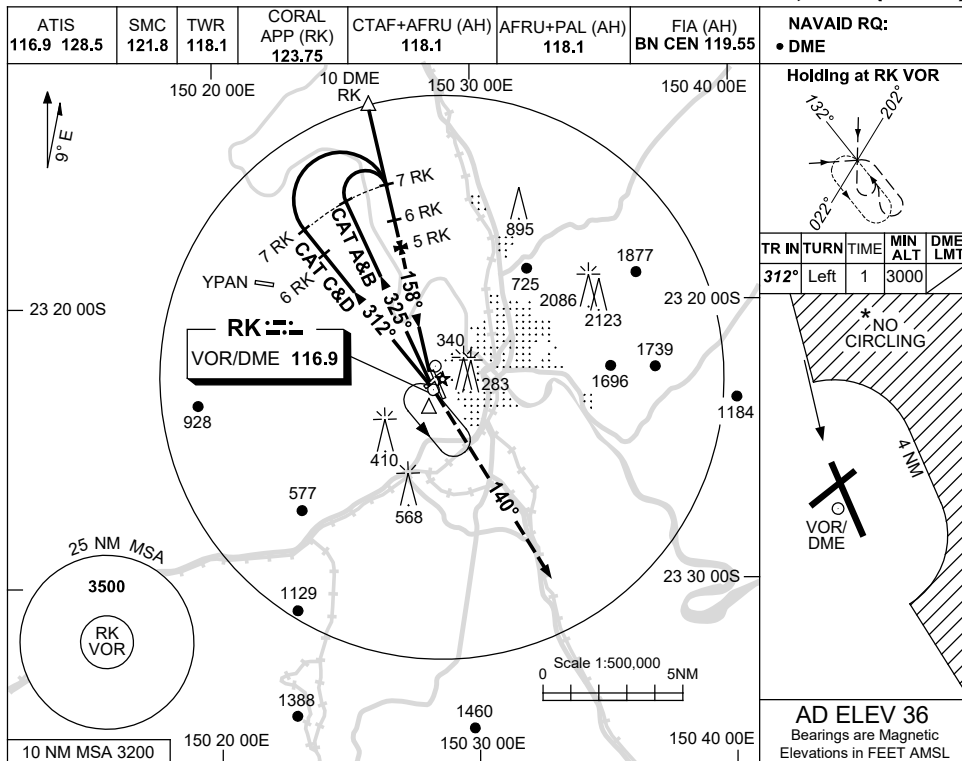


USE QNH

VOR RWY 15

1 DEC 2022

ROCKHAMPTON, QLD (YBRK)



CATEGORY	A	B	C	D
S-I VOR/DME	<b>650 (614-3.5)</b>			
CIRCLING*	<b>840 (804-2.4)</b>		<b>1080 (1044-4.0)</b>	<b>1080 (1044-5.0)</b>
ALTERNATE	(1304-4.4)		(1544-6.0)	(1544-7.0)

- NOTES**
1. MAX IAS:  
INITIAL : 210KT.  
HOLDING: 210KT.
  - \*2. NO CIRCLING  
BEYOND 4 NM  
EAST OF RWY 15/33.

Changes: CORAL APP FREQUENCY.

BRKVO01-173