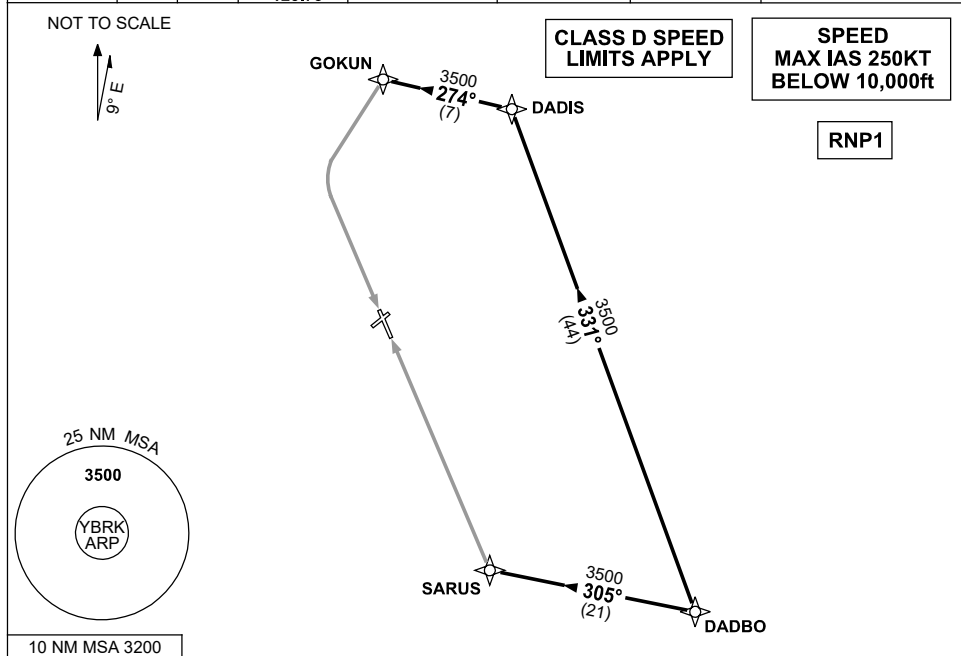


**STANDARD INSTRUMENT ARRIVAL (STAR)  
DADBO ONE ARRIVAL (RNAV)  
ROCKHAMPTON, QLD (YBRK)**

**1 DEC 2022**

ATIS 116.9 128.5	SMC 121.8	TWR 118.1	CORAL APP (RK) 123.75	CTAF+AFRU (AH) 118.1	AFRU+PAL (AH) 118.1	FIA (AH) BN CEN 119.55	Bearings are Magnetic Elevations in FEET AMSL
---------------------	--------------	--------------	--------------------------	-------------------------	------------------------	---------------------------	--



**ARRIVAL: DADBO ONE**

**RWY 15**

- From DADBO track 331° to DADIS
- Turn LEFT, track 274° to GOKUN
- Track via RNP RWY 15

**RWY 33**

- From DADBO track 305° to SARUS
- Track via RNP RWY 33

**COMMUNICATIONS FAILURE: PROCEDURE IN IMC**

- Squawk 7600, comply with vertical navigation requirements, but not below MSA.
- Track via the latest STAR clearance to the nominated runway, then fly the most suitable approach in accordance with ERSA EMERG Section 1.5.

Changes: CORAL APP FREQUENCY.

BRKSR02-173