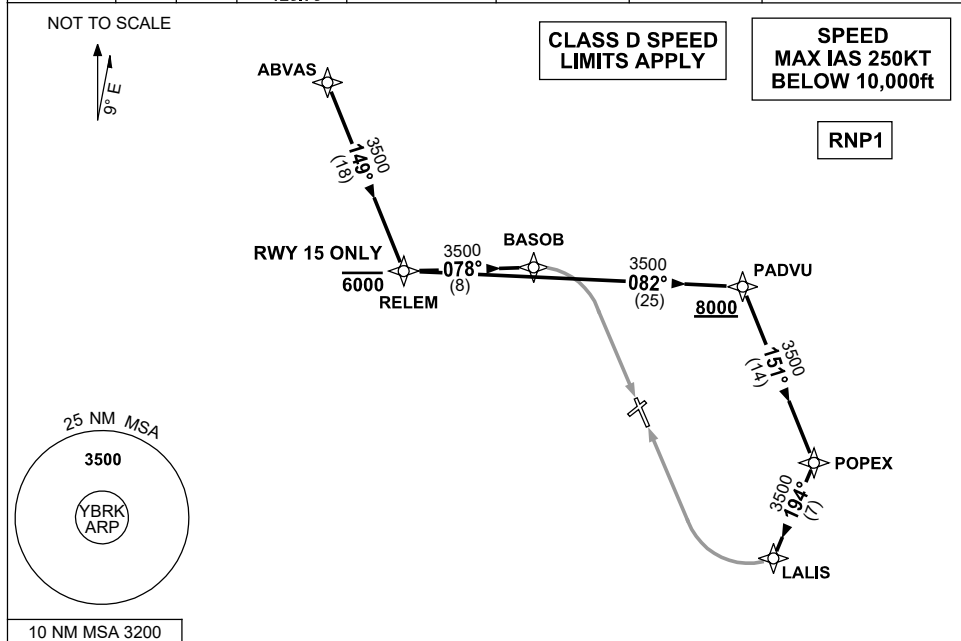


**STANDARD INSTRUMENT ARRIVAL (STAR)
ABVAS ONE ARRIVAL (RNAV)
ROCKHAMPTON, QLD (YBRK)**

1 DEC 2022

ATIS 116.9 128.5	SMC 121.8	TWR 118.1	CORAL APP (RK) 123.75	CTAF+AFRU (AH) 118.1	AFRU+PAL (AH) 118.1	FIA (AH) BN CEN 119.55	Bearings are Magnetic Elevations in FEET AMSL
---------------------	--------------	--------------	-----------------------------	-------------------------	------------------------	---------------------------	--



ARRIVAL: ABVAS ONE

RWY 15

- From ABVAS track 149° to RELEM
Cross RELEM AT or BLW 6000ft
- Turn LEFT, track 078° to BASOB
- Track via RNP RWY 15

RWY 33

- From ABVAS track 149° to RELEM
- Turn LEFT, track 082° to PADVU
Cross PADVU AT or ABV 8000ft
- Turn RIGHT, track 151° to POPEX
- Turn RIGHT, track 194° to LALIS
- Track via RNP RWY 33

COMMUNICATIONS FAILURE: PROCEDURE IN IMC

- Squawk 7600, comply with vertical navigation requirements, but not below MSA.
- Track via the latest STAR clearance to the nominated runway, then fly the most suitable approach in accordance with ERSA EMERG Section 1.5.

Changes: CORAL APP FREQUENCY.

BRKSR01-173