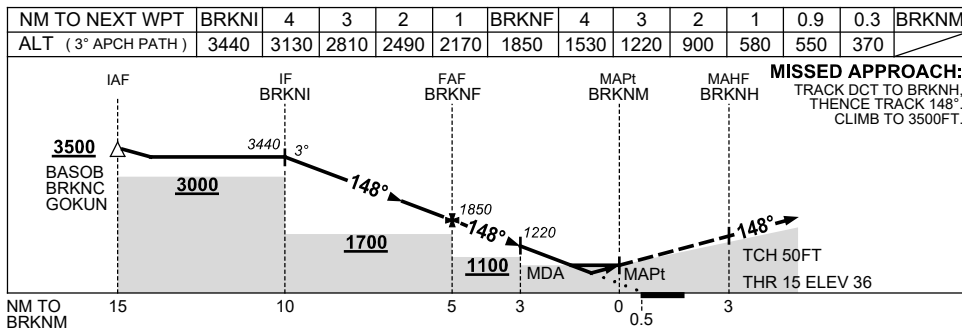
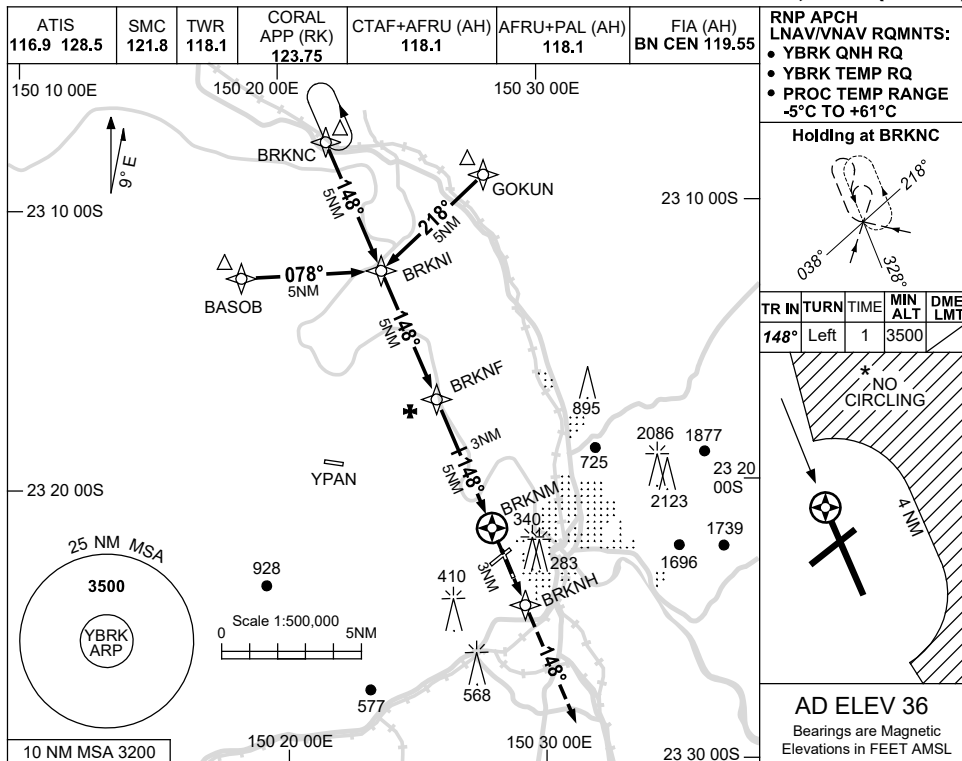


USE QNH

RNP RWY 15

1 DEC 2022

ROCKHAMPTON, QLD (YBRK)



**NOTES**

CATEGORY	A	B	C	D
LNAV/VNAV		370 (334-1.9)		
LNAV		550 (514-2.9)		
CIRCLING *	840 (804-2.4)		1080 (1044-4.0)	1080 (1044-5.0)
ALTERNATE	(1304-4.4)		(1544-6.0)	(1544-7.0)

1. MAX IAS:  
 INITIAL : 210KT.  
 \*2. NO CIRCLING  
 BEYOND 4 NM  
 EAST OF RWY 15/33.  
 3. HOLDING NOT  
 CONTAINED IN CTA.

Changes: CORAL APP FREQUENCY.

BRKGN01-173