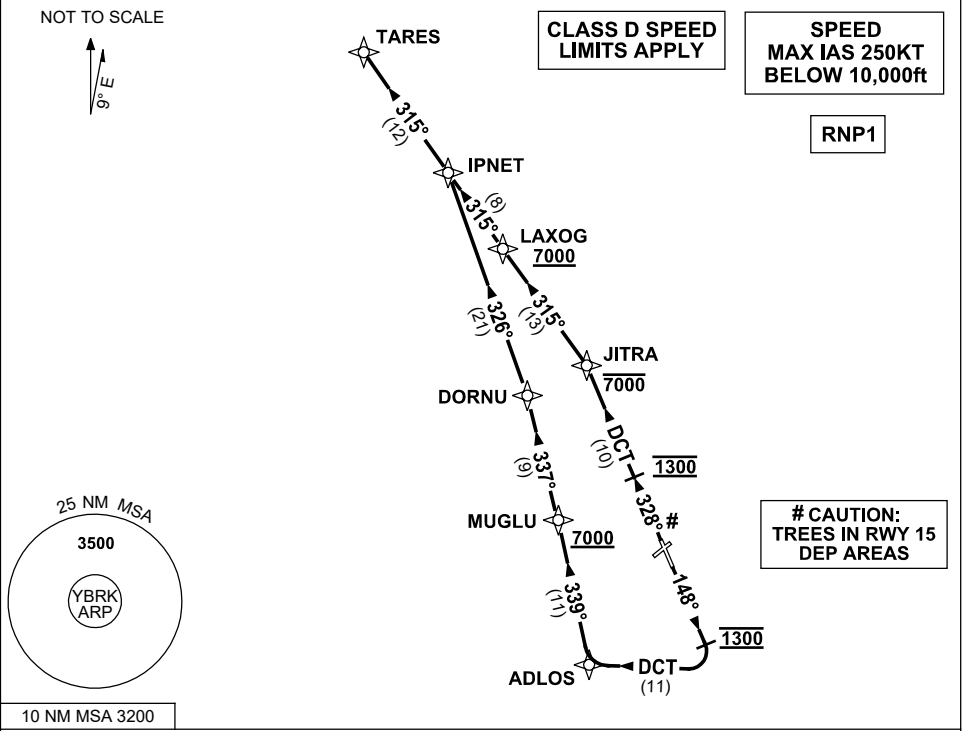


**STANDARD INSTRUMENT DEPARTURES (SID)
TARES FIVE DEPARTURE (RNAV)
ROCKHAMPTON, QLD (YBRK)**

13 JUN 2024

ATIS 116.9 128.5	SMC 121.8	TWR 118.1	CORAL APP (RK) 123.75	CTAF+AFRU (AH) 118.1	AFRU+PAL (AH) 118.1	FIA (AH) BN CEN 119.55	Bearings are Magnetic Elevations in FEET AMSL
---------------------	--------------	--------------	-----------------------------	-------------------------	------------------------	---------------------------	--



TARES FIVE DEPARTURE

RWY 15

- GRAD 3.3%
- Track 148°
- AT 1300ft turn RIGHT, track DCT to ADLOS
- Turn RIGHT, track 339° to MUGLU
Cross MUGLU AT or ABV 7000ft
- Turn LEFT, track 337° to DORNU
- Turn LEFT, track 326° to IPNET
- Turn LEFT, track 315° to TARES,
then as cleared

RWY 33

- GRAD 3.4% to 2500ft, then 3.3%
- Track 328°
- AT 1300ft turn LEFT, track DCT to JITRA
Cross JITRA AT or BLW 7000ft
- Turn LEFT, track 315° to LAXOG
Cross LAXOG AT or ABOVE 7000ft
- Track 315° to IPNET
- Track 315° to TARES, then as cleared