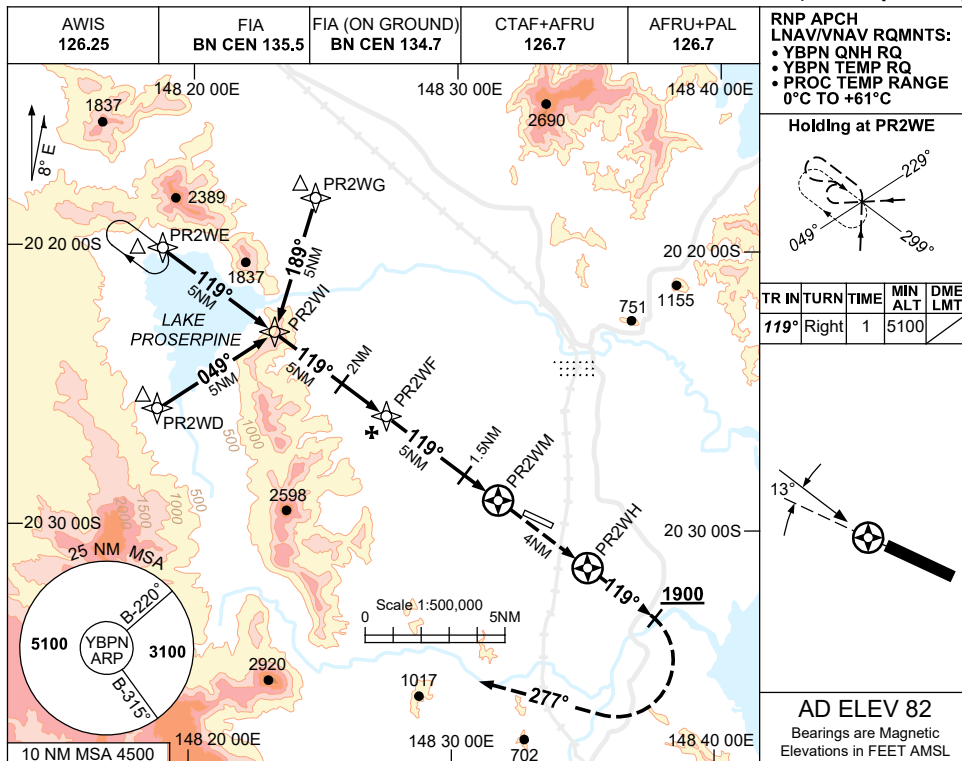


USE QNH

RNP RWY 11

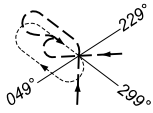
21 MAR 2024

**PROSERPINE/WHITSUNDAY COAST, QLD (YBPN)**

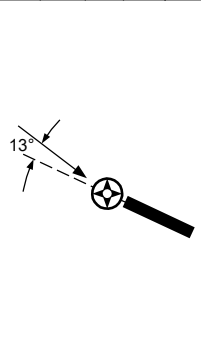


RNP APCH  
LNAV/VNAV RQMNTS:  
• YBPN QNH RQ  
• YBPN TEMP RQ  
• PROC TEMP RANGE  
0°C TO +61°C

Holding at PR2WE



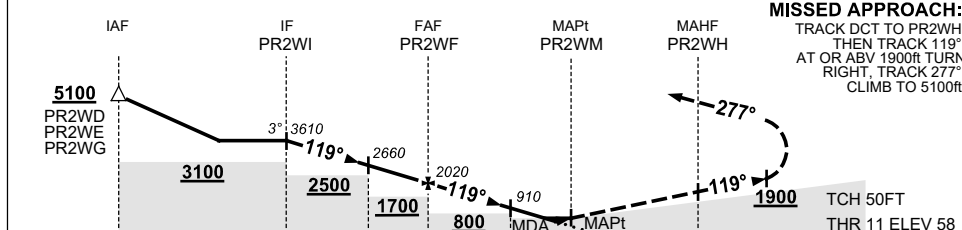
TR	TURN	TIME	MIN ALT	DME LMT
119°	Right	1	5100	



AD ELEV 82

Bearings are Magnetic  
Elevations in FEET AMSL

NM TO NEXT WPT	PR2WI	4	3	2	1	PR2WF	4	3	2	1.5	0.8	0.4	PR2WM
ALT (3° APCH PATH)	3610	3300	2980	2660	2340	2020	1700	1380	1070	910	680	560	



**MISSED APPROACH:**  
TRACK DCT TO PR2WH,  
THEN TRACK 119°.  
AT OR ABV 1900FT TURN  
RIGHT, TRACK 277°.  
CLIMB TO 5100ft.

TCH 50FT  
THR 11 ELEV 58

**NOTES**

- MAX IAS:  
INITIAL : 210KT.  
MAP TURN : 200KT.
- HOLDING OVERLAPS WITH YBWN RNP S HOLDING. ACFT SEPARATION NOT ASSURED.
- COLOUR: SEE SPEC NOTICES.

CATEGORY	A	B	C	D
LNAV/VNAV	560 (502-2.8)			
LNAV	680 (622-3.5)			
CIRCLING	800 (718-2.4)		1030 (948-4.0)	1420 (1338-5.0)
ALTERNATE	(1218-4.4)		(1448-6.0)	(1838-7.0)

Changes: NOTES.

BPNGN02-178